

Indices	CMP	%1D
Sensex	34155	-0.42
Nifty	10500	-0.37
BSE-Midcap	16881	0.17
BSE-Smallcap	18492	0.16
SGX Nifty	10541	0.74

Sector	CMP	%1D
Capital Goods	19622	0.33
Realty	2522	0.19
Consumer Dur	21302	-0.03
Metal	15256	0.02
Oil & Gas	15584	-0.34
Teck	6535	-0.26

Index	FY17	FY18E	FY19E
Sensex EPS	1469	1785	1958
P/E	24	20	18
Nifty EPS	466	575	623
P/E	24	19	18

Trading activity in cash Rs Cr			
Date 14 February	Net	MTD	FY18
FII	-728	-7751	-75562
DII	-152	6608	97037

Global Indices	Current Value	%1D
DowJones	24629	-0.04
Nasdaq	7077	0.90
DAX	12339	1.16
Nikkei 225	21154	-0.43
FTSE 100	7213	0.64
Hang Seng	30515	2.22
Shanghai	3199	0.45
Straits Times	3402	-0.36

Forex Rate		
USD/INR	64.19	-0.37%
EUR/INR	79.32	0.27%
GBP/INR	89.00	-0.39%
JPY/INR	59.75	0.74%

G-Sec Yield		
	Price	Change%
1yr Bond Yield	6.70	0.46
10yr Bond Yield	7.49	-0.07

Market Outlook

Indian markets are expected to open with a flat positive note backed by mixed global sentiments. On overall basis direction for the markets are on consolidation note. Nifty major supports near 10300. We advise investors to start accumulating quality counters and watch strategy for the time being.

Top Domestic News

- **Results Today:** Ambuja Cements, Merck, TVS Motor, NBCC
- Nestle Q4 Net Profit At Rs 311.8 Cr Revenue At Rs 2,601.5 Cr
- Grauer and Weil-YoY Revenue up 14 percent at 126cr EBITDA up 61 percent at 30cr OPM at 23.8 percent vs 17 percent PAT up 54 percent at 20cr.
- GTPL Hathway Revenue up 22 percent at 189cr EBITDA up 46 percent at 57cr OPM at 30.2 percent vs 25.2 percent PAT up 4.7X at 23.7cr.
- Endurance Tech (YoY) Revenue up 19.8 percent at Rs 1,581 crore. Net profit up 5.4 percent at Rs 78 crore. EBITDA up 25.6 percent at Rs 223.5 crore. Margin at 14.1 percent vs 13.5 percent
- Zee Learn makes an open offer to acquire 1.86 cr equity shares in MT Educare.
- Idea Cellular QIP launched, to raise USD 400-546 million including greenshoe.
- Andhra Bank revises 1-year MCLR To 8.4%.
- Infibeam board approves issuance of convertible warrants up to Rs 40 cr to Network18.
- Uniply to consider subdivision of shares from FV Rs10 to FV Rs2.
- Vardhman Specialty Steel board approved the opening of QIP on 14th Feb.
- Prime focus issues warrants worth 3.11cr to promoters and non-promoters.
- Mercator to demerge dredging business from the co.
- Tata power to issue NCDs worth Rs 3500cr via private placement.
- Sunteck Realty board approved merger of 3 subsidiaries with itself.
- ATC take Reliance Communications, its arm to HC to recover Rs101cr.
- UltraTech, Dalmia consortium said to lead bidding for Binani Cement.
- Adani Enterprises looking to buy mines in Indonesia.

Global News

Wall Street surged on Wednesday as investors shrugged off stronger-than-expected inflation data and snapped up shares of Facebook, Amazon.com and Apple. The Dow Jones Industrial Average jumped 1.03 % to end at 24,893.49 while the S&P 500 rose 1.34 % to finish at 2,698.63. The Nasdaq Composite surged 1.86 % to 7,143.62, Reuters reported. **Asian stocks** advanced early on Thursday, taking cues from the rally on Wall Street following the release of stronger-than-expected US inflation data overnight. The Nikkei 225 rose 1.14 %, or 242.61 points, in early trade, CNBC reported.

NSE Top Gainers

Script	LTP	%1D
TECHM	608.50	3.07
IBULHSGFIN	1341.00	1.99
ADANIPTS	410.60	1.80
BHARTIARTL	431.50	1.67
RELIANCE	929.00	1.47

NSE Top Losers

Script	LTP	%1D
YESBANK	319.35	-4.79
SBIN	275.50	-4.59
AXISBANK	541.80	-3.97
ONGC	184.55	-3.38
INFRATEL	327.85	-3.07

BSE Top Gainers

Script	LTP	%1D
HCL-INSYS	67.70	11.90
RCOM	29.55	9.04
KEC	390.15	7.78
GSKCONS	6421.30	7.38
NCC	126.50	6.75

BSE Top Losers

Script	LTP	%1D
PNB	145.80	-9.81
JKTYRE	175.35	-7.88
BANKINDIA	133.45	-7.87
ALBK	56.25	-7.79
ORIENTBNK	104.00	-7.43

Technical View

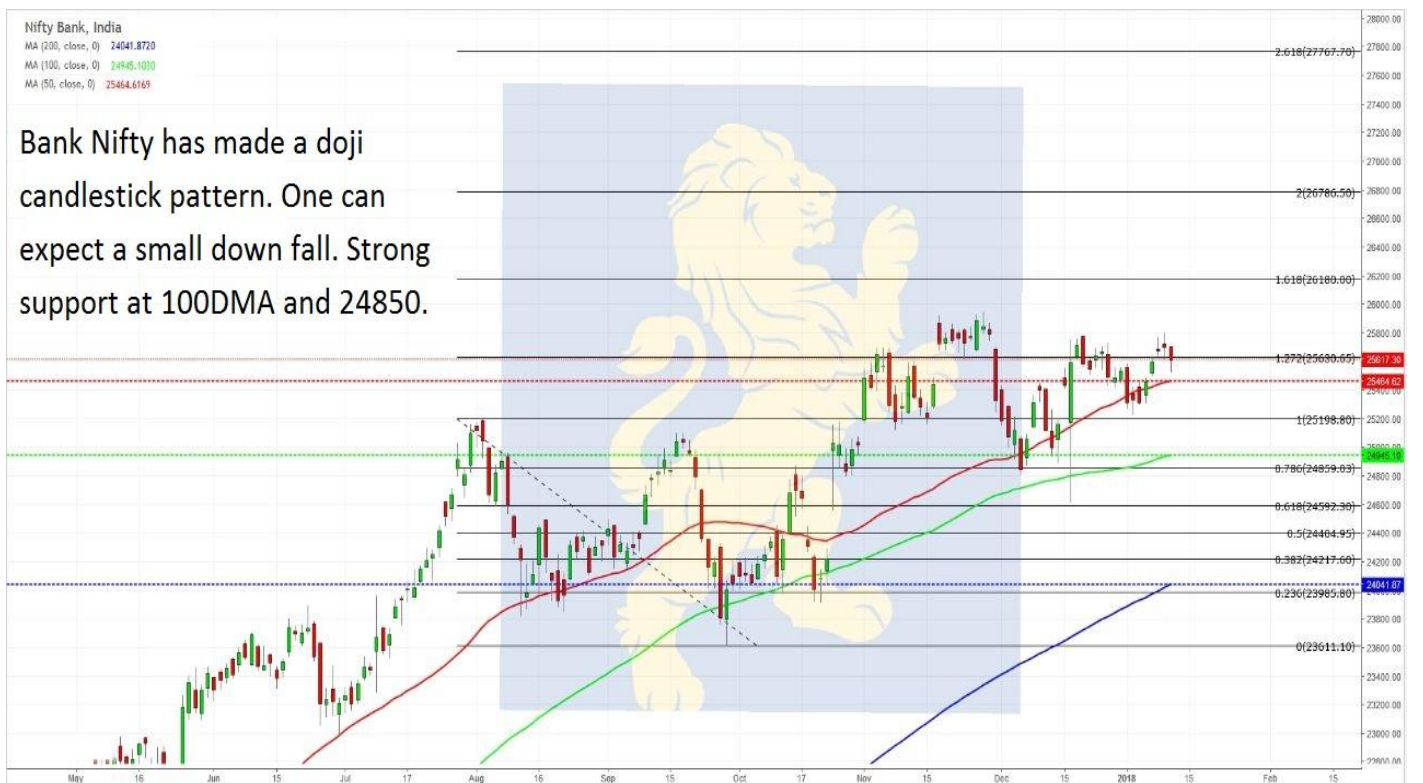
Nifty 50, India
 MA (200, close, 0) 9866.8793
 MA (100, close, 0) 10180.2700
 MA (50, close, 0) 10351.4070

Nifty has achieved DOUBLE BOTTOM patterns target. Nifty made a doji candlestick pattern. It is very important that Nifty closes above 10660 for more bullish upmove.



Nifty Bank, India
 MA (200, close, 0) 24041.8720
 MA (100, close, 0) 24945.1030
 MA (50, close, 0) 25464.6169

Bank Nifty has made a doji candlestick pattern. One can expect a small down fall. Strong support at 100DMA and 24850.



Msearch



Disclaimer: The views expressed / recommendations made in this report are based on Technical Analysis techniques and could be at variance with the company's / group's views based on fundamental research. The report and information contained herein is strictly confidential and meant solely for the selected recipient and may not be altered in any way, transmitted to, copied or distributed, in part or in whole, to any other person or to the media or reproduced in any form, without prior written consent. This report and information herein is solely for informational purpose and may not be used or considered as an offer document or solicitation of offer to buy or sell or subscribe for securities or other financial instruments. Nothing in this report constitutes investment, legal, accounting and tax advice or a representation that any investment or strategy is suitable or appropriate to your specific circumstances. The securities discussed and opinions expressed in this report may not be suitable for all investors, who must make their own investment decisions, based on their own investment objectives, financial positions and needs of specific recipient. This may not be taken in substitution for the exercise of independent judgment by any recipient. Each recipient of this document should make such investigations as it deems necessary to arrive at an independent evaluation of an investment in the securities of companies referred to in this document (including the merits and risks involved), and should consult its own advisors to determine the merits and risks of such an investment. The investment discussed or views expressed may not be suitable for all investors. Certain transactions -including those involving futures, options another derivatives as well as non-investment grade securities - involve substantial risk and are not suitable for all investors. No representation or warranty, express or implied, is made as to the accuracy, completeness or fairness of the information and opinions contained in this document. The Disclosures of Interest Statement incorporated in this document is provided solely to enhance the transparency and should not be treated as endorsement of the views expressed in the report. This information is subject to change without any prior notice. The Company reserves the right to make modifications and alternations to this statement as may be required from time to time without any prior approval. MEHTA EQUITIES LTD, its affiliates, their directors and the employees may from time to time, effect or have effected an own account transaction in, or deal as principal or agent in or for the securities mentioned in this document. They may perform or seek to perform investment banking or other services for, or solicit investment banking or other business from, any company referred to in this report. Each of these entities functions as a separate, distinct and independent of each other. The recipient should take this into account before interpreting the document. This report has been prepared on the basis of information that is already available in publicly accessible media or developed through analysis of MEHTA EQUITIES LTD. The views expressed are those of the analyst and the Company may or may not subscribe to all the views expressed therein. This document is being supplied to you solely for your information and may not be reproduced, redistributed or passed on, directly or indirectly, to any other person or published, copied, in whole or in part, for any purpose. Neither this document nor any copy of it may be taken or transmitted into the United State (to U.S. Persons), Canada, or Japan or distributed, directly or indirectly, in the United States or Canada or distributed or redistributed in Japan or to any resident thereof. This report is not directed or intended for distribution to, or use by, any person or entity who is a citizen or resident of or located in any locality, state, country or other jurisdiction, where such distribution, publication, availability or use would be contrary to law, regulation or which would subject MEHTA EQUITIES LTD to any registration or licensing requirement within such jurisdiction. The securities described herein may or may not be eligible for sale in all jurisdictions or to certain category of investors. Persons in whose possession this document may come are required to inform themselves of and to observe such restriction. Neither the Firm, not its directors, employees, agents or representatives shall be liable for any damages whether direct or indirect, incidental, special or consequential including lost revenue or lost profits that may arise from or in connection with the use of the information.

MEHTA EQUITIES LTD

BSE: - Membership Clearing No. 122 - SEBI Regn. No. INB010683856, NSE: - Membership Clearing No. 13512- SEBI Regn. No. INB231351231, NSE FO SEBI Regn. No. INF231351231, CIN No: U65990MH1994PLC078478
MSEI: - Membership Clearing No. 51800 - SEBI Regn. No. INB261351234

Mehta Equities Limited, 903, 9th floor, Lodha Supremus, Dr.E. Moses Road, Worli Naka, Worli, Mumbai 400 018, India
Tel: +91 22 6150 7101, Fax: +91 22 6150 7102

Email: info@mehtagroup.in, Website: www.mehtagroup.in