

Indices	CMP	%1D
Sensex	34184	-0.47
Nifty	10492	-0.58
BSE-Midcap	16562	-0.23
BSE-Smallcap	18127	0.21
SGX Nifty	10466	-0.51

Sector	CMP	%1D
Capital Goods	19075	-0.65
Realty	2468	0.12
Consumer Dur	21187	0.23
Metal	15173	-1.21
Oil & Gas	15505	-0.18
Teck	6742	0.55

Index	FY17	FY18E	FY19E
Sensex EPS	1469	1785	1958
P/E	24	20	18
Nifty EPS	466	575	623
P/E	24	19	18

Trading activity in cash Rs Cr			
Date 28 February	Net	MTD	FY18
FII	-1750	-18611	-86422
DII	1596	17807	108236

Global Indices	Current Value	%1D
DowJones	25404	-0.02
Nasdaq	7329	-0.01
DAX	12435	-0.44
Nikkei 225	22068	-1.46
FTSE 100	7231	-0.70
Hang Seng	30844	-1.37
Shanghai	3259	-1.00
Straits Times	3517	-0.64

Forex Rate		
USD/INR	65.10	0.20%
EUR/INR	79.58	-0.30%
GBP/INR	90.44	0.08%
JPY/INR	60.80	0.86%

G-Sec Yield	Price	Change%
1yr Bond Yield	6.71	0.57
10yr Bond Yield	7.72	0.73

Market Outlook

Indian markets are expected to open with a lower note backed by weaker global sentiments. On overall basis direction for the markets are on consolidation mode. Nifty major supports near 10420 We advise investors to start accumulating quality counters.

Top Domestic News

- Q3FY18 GDP Growth At 7.2% Vs 6.5% (QoQ) & Vs 6.7% (YoY).
- April-Jan Eight Core Ind Growth At 4.3% Vs 5.1% (YoY).
- ICICI Bank says bank is a part of working capital consortium to Gitanjali Gems wherein its exposure is not the largest.
- Tata Power - The validity of PPA between BEST and TPC-G has been extended for one year from 1st April 2018 for revised quantum of 676MW.
- Reliance Power approves QIP of Rs 2000cr and amount will be used to reduce debt of the Company.
- MOIL has revised prices for different grades of Manganese Ore. For Ferro Grade, SMGR and Chemical grade prices have been increased by 10%. Prices of fines have been increased by 5%.
- L&T Infotech sale of shares by promoters to meet minimum public shareholding.
- Fortis promoter holding falls down to 0.77%.
- Bharti Airtel wants to exit tower business.
- Ashoka Buildcon –Macquaire bag ToT projects worth Rs 9700cr.
- Indiabulls Real to acquire Farallon's stake in Singapore trust.
- Dilip Buildcon has declared L-1 bidder by the National Highways Authority of India for three new projects valued at Rs 5390 crore.

Global News

US stocks sold off late to end sharply lower on Wednesday, dragged down by continued worries over rising interest rates, and the Dow and S&P 500 capped their worst months since January 2016. The S&P 500 also snapped a 10-month straight run of gains, which had been its longest monthly winning streak since an 11-month run from March 1958 to January 1959. The Dow Jones Industrial Average fell 380.83 points, or 1.5 %, to 25,029.2, the S&P 500 lost 30.45 points, or 1.11 %, to 2,713.83 and the Nasdaq Composite dropped 57.35 points, or 0.78 %, to 7,273.01, Reuters reported. Asian stocks declined early on the first trading day of the month after finishing February with losses. Declines in the region also tracked sharp losses seen stateside in the previous session. The Nikkei 225 declined 1.13 %, or 250 points, CNBC reported.

NSE Top Gainers

Script	LTP	%1D
INFY	1169.85	1.71
UPL	728.70	1.05
EICHERMOTOR	27420.00	0.98
HINDPETRO	380.50	0.93
CIPLA	591.00	0.77

NSE Top Losers

Script	LTP	%1D
VEDL	330.00	-3.11
ICICIBNK	314.00	-2.53
HINDUNILVR	1314.45	-2.37
IBUHSGFIN	1250.35	-2.30
AXISBANK	526.70	-2.17

BSE Top Gainers

Script	LTP	%1D
FLFL	403.25	6.10
INDIANB	331.00	6.06
LAXMIMACH	6784.80	5.81
RAJESHEXPO	836.80	5.06
IIFL	754.95	4.70

BSE Top Losers

Script	LTP	%1D
LAKSVILAS	104.65	-6.14
VAKRANGEE	162.95	-4.99
VIDEOIND	14.60	-4.89
RAIN	381.00	-4.56
BBTC	1425.20	-4.22

Technical View

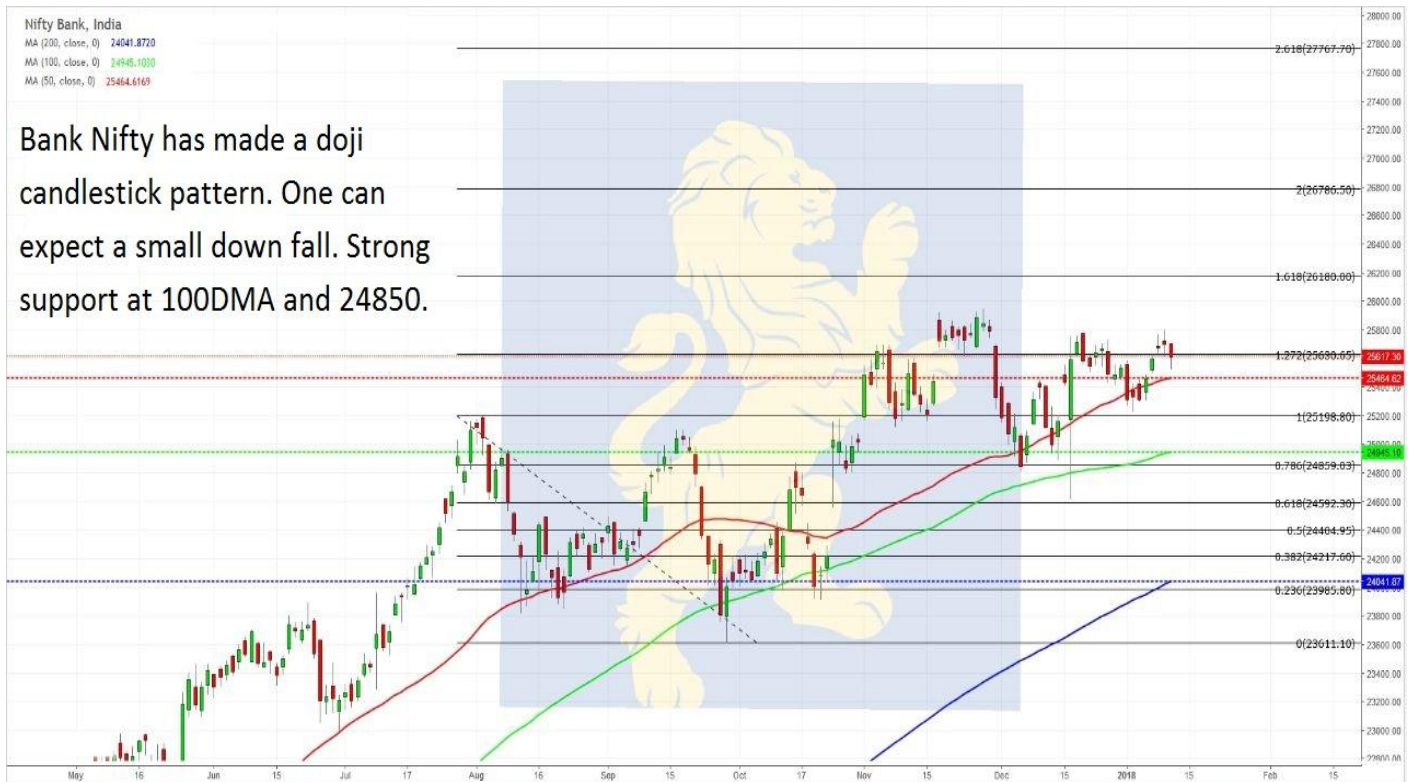
Nifty 50, India
 MA (200, close, 0) 9866.8793
 MA (100, close, 0) 10180.2700
 MA (50, close, 0) 10351.4070

Nifty has achieved DOUBLE BOTTOM patterns target. Nifty made a doji candlestick pattern. It is very important that Nifty closes above 10660 for more bullish upmove.



Nifty Bank, India
 MA (200, close, 0) 24041.8720
 MA (100, close, 0) 24945.1030
 MA (50, close, 0) 25464.6169

Bank Nifty has made a doji candlestick pattern. One can expect a small down fall. Strong support at 100DMA and 24850.



Msearch



Disclaimer: The views expressed / recommendations made in this report are based on Technical Analysis techniques and could be at variance with the company's / group's views based on fundamental research. The report and information contained herein is strictly confidential and meant solely for the selected recipient and may not be altered in any way, transmitted to, copied or distributed, in part or in whole, to any other person or to the media or reproduced in any form, without prior written consent. This report and information herein is solely for informational purpose and may not be used or considered as an offer document or solicitation of offer to buy or sell or subscribe for securities or other financial instruments. Nothing in this report constitutes investment, legal, accounting and tax advice or a representation that any investment or strategy is suitable or appropriate to your specific circumstances. The securities discussed and opinions expressed in this report may not be suitable for all investors, who must make their own investment decisions, based on their own investment objectives, financial positions and needs of specific recipient. This may not be taken in substitution for the exercise of independent judgment by any recipient. Each recipient of this document should make such investigations as it deems necessary to arrive at an independent evaluation of an investment in the securities of companies referred to in this document (including the merits and risks involved), and should consult its own advisors to determine the merits and risks of such an investment. The investment discussed or views expressed may not be suitable for all investors. Certain transactions -including those involving futures, options another derivatives as well as non-investment grade securities - involve substantial risk and are not suitable for all investors. No representation or warranty, express or implied, is made as to the accuracy, completeness or fairness of the information and opinions contained in this document. The Disclosures of Interest Statement incorporated in this document is provided solely to enhance the transparency and should not be treated as endorsement of the views expressed in the report. This information is subject to change without any prior notice. The Company reserves the right to make modifications and alternations to this statement as may be required from time to time without any prior approval. MEHTA EQUITIES LTD, its affiliates, their directors and the employees may from time to time, effect or have effected an own account transaction in, or deal as principal or agent in or for the securities mentioned in this document. They may perform or seek to perform investment banking or other services for, or solicit investment banking or other business from, any company referred to in this report. Each of these entities functions as a separate, distinct and independent of each other. The recipient should take this into account before interpreting the document. This report has been prepared on the basis of information that is already available in publicly accessible media or developed through analysis of MEHTA EQUITIES LTD. The views expressed are those of the analyst and the Company may or may not subscribe to all the views expressed therein. This document is being supplied to you solely for your information and may not be reproduced, redistributed or passed on, directly or indirectly, to any other person or published, copied, in whole or in part, for any purpose. Neither this document nor any copy of it may be taken or transmitted into the United State (to U.S. Persons), Canada, or Japan or distributed, directly or indirectly, in the United States or Canada or distributed or redistributed in Japan or to any resident thereof. This report is not directed or intended for distribution to, or use by, any person or entity who is a citizen or resident of or located in any locality, state, country or other jurisdiction, where such distribution, publication, availability or use would be contrary to law, regulation or which would subject MEHTA EQUITIES LTD to any registration or licensing requirement within such jurisdiction. The securities described herein may or may not be eligible for sale in all jurisdictions or to certain category of investors. Persons in whose possession this document may come are required to inform themselves of and to observe such restriction. Neither the Firm, not its directors, employees, agents or representatives shall be liable for any damages whether direct or indirect, incidental, special or consequential including lost revenue or lost profits that may arise from or in connection with the use of the information.

MEHTA EQUITIES LTD

BSE: - Membership Clearing No. 122 - SEBI Regn. No. INB010683856, NSE: - Membership Clearing No. 13512- SEBI Regn. No. INB231351231, NSE FO SEBI Regn. No. INF231351231, CIN No: U65990MH1994PLC078478
MSEI: - Membership Clearing No. 51800 - SEBI Regn. No. INB261351234

Mehta Equities Limited, 903, 9th floor, Lodha Supremus, Dr.E. Moses Road, Worli Naka, Worli, Mumbai 400 018, India
Tel: +91 22 6150 7101, Fax: +91 22 6150 7102

Email: info@mehtagroup.in, Website: www.mehtagroup.in