

Indices	CMP	%1D
Sensex	34142	0.95
Nifty	10491	1.04
BSE-Midcap	16562	1.47
BSE-Smallcap	17996	1.54
SGX Nifty	10555	0.48

Sector	CMP	%1D
Capital Goods	18890	1.07
Realty	2436	0.68
Consumer Dur	20968	0.23
Metal	15327	3.16
Oil & Gas	15382	0.99
Teck	6730	0.91

Index	FY17	FY18E	FY19E
Sensex EPS	1469	1785	1958
P/E	24	20	18
Nifty EPS	466	575	623
P/E	24	19	18

Trading activity in cash Rs Cr			
Date 23 February	Net	MTD	FY18
FII	-486	-14836	-82647
DII	1514	13756	104185

Global Indices	Current Value	%1D
DowJones	25309	1.39
Nasdaq	7337	1.73
DAX	12483	0.18
Nikkei 225	21892	0.71
FTSE 100	7244	-0.11
Hang Seng	31267	0.96
Shanghai	3289	0.63
Straits Times	3533	1.27

Forex Rate		
USD/INR	64.73	-0.50%
EUR/INR	79.60	-0.42%
GBP/INR	90.24	-0.08%
JPY/INR	60.56	-0.09%

G-Sec Yield	Price	Change%
1yr Bond Yield	6.68	-1.88
10yr Bond Yield	7.68	-0.89

Market Outlook

Indian markets are expected to open with a positive note backed by mixed global sentiments but sustainable has no strength. On overall basis direction for the markets are on consolidation. Nifty major supports near 10200- 10300. We advise investors to start accumulating quality counters.

Top Domestic News

- Dr Reddy's Laboratories FDA maintains OAI status for Srikakulam plant Co has recd EIR for the plant
- Fortis Healthcare Step down subsidiary of the Co (FCCL) extends MoU with another step down subsidiary of the Company (LHPL) to sell entire shareholding of FCCL to promoters of LHPL
- Atlas Cycles- Q3FY18-YoY Revenue flat at Rs 145cr EBITDA profit at Rs 2 cr vs loss PAT at Rs 24 lakhs vs loss
- A2Z Infra Approval of One Time Settlement (OTS) with Standard Chartered Bank towards Debt settlement of Rs 344.93 crore, for a Total Consideration of INR120 Cr and allotment of shares to Standard Chartered bank.
- AU Small Finance Bank - IndiRa has upgraded rating from AA-/stable to A+/positive
- Magma Fincorp to seek approval of members wrt issuance of debt securities upto an overall ceiling pf Rs 2000cr on private placement basis
- Idea raises Rs 3500cr via QIP at Rs 82.5/ share
- PNB - IndRa updates rating of various bonds to "Rating watch negative"
- Sakuma Exports submits expression of interest for acquiring Ruchi Soya
- Dena Bank fixes share price at Rs 16.89 for issue of shares to Gol on preferential basis
- DCM Shriram board discussed possibility of adding chlor alkali capacity supported by downstream products in medium term
- Airtel and Motorola partner to offer 4G smartphones starting at Rs 3999
- Welspun Enterprises lowest bidder for NHAI Tamil Nadu road project.
- Sadbhav Infra subsidiary completes debt refinancing
- Reliance Power meeting of the board on Feb 28 to approve raising of funds via QIP
- CBI files case against the Simbhaoli Sugars for Rs 110cr loss to Oriental Bank of Commerce
- Puravankara in talks to set up two investment platforms totaling Rs 4000cr to fund its expansion plans
- ONGC Videsh drops plan to build LNG export facility in Iran
- Jaypee Infra bidders offer upfront pay, loan-land swap

Global News

US stocks rallied on Friday, lifted by gains in technology stocks and a retreat in Treasury yields as the Federal Reserve eased concerns about the path of interest rate hikes this year. The Dow Jones Industrial Average rose 347.51 points, or 1.39 %, to 25,309.99, the S&P 500 gained 43.34 points, or 1.60 %, to 2,747.30 and the Nasdaq Composite added 127.30 points, or 1.77 %, to 7,337.39, Reuters reported. Asian markets rose early on Monday, tracking gains seen on Wall Street as US bond yields receded from recent four-year highs in the last session. Japan's Nikkei 225 soared 292.69 points, or 1.34 % while the Kospi added 0.42 %, CNBC reported.

NSE Top Gainers

Script	LTP	%1D
TATASTEEL	676.00	6.03
SUNPHARMA	574.00	6.01
UPL	702.25	3.97
TECHM	624.00	3.55
VEDL	338.70	3.06

NSE Top Losers

Script	LTP	%1D
ASIANPAINT	1100.95	-1.53
GAIL	459.50	-1.43
INFY	1154.40	-0.55
EICHERMOTOR	26735.00	-0.50
HINDUNILVR	1321.55	-0.37

BSE Top Gainers

Script	LTP	%1D
JPASSO	19.20	17.07
MINDTREE	812.35	9.60
FORTIS	159.95	9.33
KSCL	494.20	7.38
RADICO	353.20	7.06

BSE Top Losers

Script	LTP	%1D
JUBILANT	891.30	-10.16
VAKRANGEE	190.00	-5.00
IIFL	736.95	-4.22
SIEMENS	1171.10	-2.34
GAIL	458.35	-1.63

Technical View

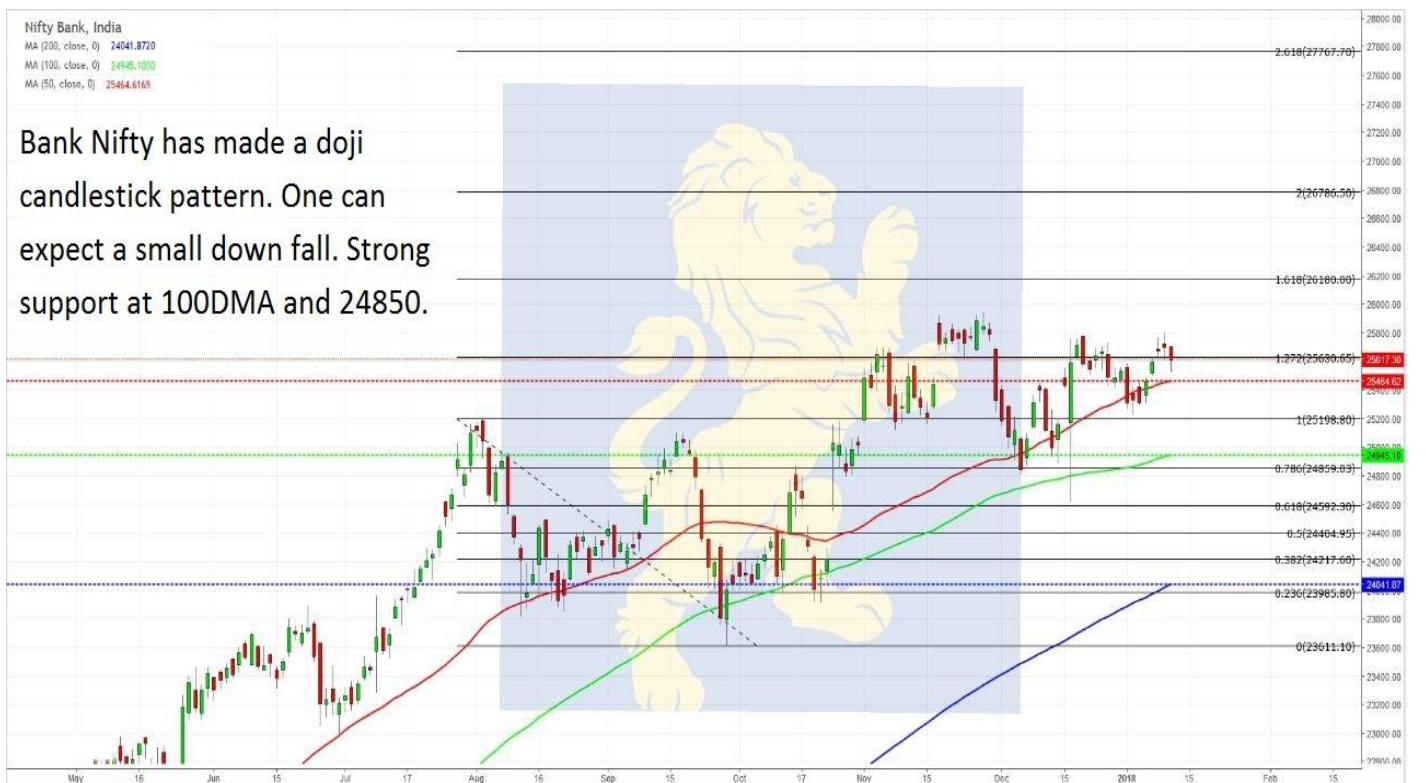
Nifty 50, India
 MA (200, close, 0) 9866.8793
 MA (100, close, 0) 10180.2700
 MA (50, close, 0) 10351.4070

Nifty has achieved DOUBLE BOTTOM patterns target. Nifty made a doji candlestick pattern. It is very important that Nifty closes above 10660 for more bullish upmove.



Nifty Bank, India
 MA (200, close, 0) 24041.8720
 MA (100, close, 0) 24945.1030
 MA (50, close, 0) 25464.6169

Bank Nifty has made a doji candlestick pattern. One can expect a small down fall. Strong support at 100DMA and 24850.



Msearch



Disclaimer: The views expressed / recommendations made in this report are based on Technical Analysis techniques and could be at variance with the company's / group's views based on fundamental research. The report and information contained herein is strictly confidential and meant solely for the selected recipient and may not be altered in any way, transmitted to, copied or distributed, in part or in whole, to any other person or to the media or reproduced in any form, without prior written consent. This report and information herein is solely for informational purpose and may not be used or considered as an offer document or solicitation of offer to buy or sell or subscribe for securities or other financial instruments. Nothing in this report constitutes investment, legal, accounting and tax advice or a representation that any investment or strategy is suitable or appropriate to your specific circumstances. The securities discussed and opinions expressed in this report may not be suitable for all investors, who must make their own investment decisions, based on their own investment objectives, financial positions and needs of specific recipient. This may not be taken in substitution for the exercise of independent judgment by any recipient. Each recipient of this document should make such investigations as it deems necessary to arrive at an independent evaluation of an investment in the securities of companies referred to in this document (including the merits and risks involved), and should consult its own advisors to determine the merits and risks of such an investment. The investment discussed or views expressed may not be suitable for all investors. Certain transactions -including those involving futures, options another derivatives as well as non-investment grade securities - involve substantial risk and are not suitable for all investors. No representation or warranty, express or implied, is made as to the accuracy, completeness or fairness of the information and opinions contained in this document. The Disclosures of Interest Statement incorporated in this document is provided solely to enhance the transparency and should not be treated as endorsement of the views expressed in the report. This information is subject to change without any prior notice. The Company reserves the right to make modifications and alternations to this statement as may be required from time to time without any prior approval. MEHTA EQUITIES LTD, its affiliates, their directors and the employees may from time to time, effect or have effected an own account transaction in, or deal as principal or agent in or for the securities mentioned in this document. They may perform or seek to perform investment banking or other services for, or solicit investment banking or other business from, any company referred to in this report. Each of these entities functions as a separate, distinct and independent of each other. The recipient should take this into account before interpreting the document. This report has been prepared on the basis of information that is already available in publicly accessible media or developed through analysis of MEHTA EQUITIES LTD. The views expressed are those of the analyst and the Company may or may not subscribe to all the views expressed therein. This document is being supplied to you solely for your information and may not be reproduced, redistributed or passed on, directly or indirectly, to any other person or published, copied, in whole or in part, for any purpose. Neither this document nor any copy of it may be taken or transmitted into the United State (to U.S. Persons), Canada, or Japan or distributed, directly or indirectly, in the United States or Canada or distributed or redistributed in Japan or to any resident thereof. This report is not directed or intended for distribution to, or use by, any person or entity who is a citizen or resident of or located in any locality, state, country or other jurisdiction, where such distribution, publication, availability or use would be contrary to law, regulation or which would subject MEHTA EQUITIES LTD to any registration or licensing requirement within such jurisdiction. The securities described herein may or may not be eligible for sale in all jurisdictions or to certain category of investors. Persons in whose possession this document may come are required to inform themselves of and to observe such restriction. Neither the Firm, not its directors, employees, agents or representatives shall be liable for any damages whether direct or indirect, incidental, special or consequential including lost revenue or lost profits that may arise from or in connection with the use of the information.

MEHTA EQUITIES LTD

BSE: - Membership Clearing No. 122 - SEBI Regn. No. INB010683856, NSE: - Membership Clearing No. 13512- SEBI Regn. No. INB231351231, NSE FO SEBI Regn. No. INF231351231, CIN No: U65990MH1994PLC078478
MSEI: - Membership Clearing No. 51800 - SEBI Regn. No. INB261351234

Mehta Equities Limited, 903, 9th floor, Lodha Supremus, Dr.E. Moses Road, Worli Naka, Worli, Mumbai 400 018, India
Tel: +91 22 6150 7101, Fax: +91 22 6150 7102

Email: info@mehtagroup.in, Website: www.mehtagroup.in