

Indices	CMP	%1D
Sensex	36033	-0.69
Nifty	11049	-0.73
BSE-Midcap	17591	-0.67
BSE-Smallcap	18873	-1.34
SGX Nifty	11025	-0.37

Sector	CMP	%1D
Capital Goods	20594	-0.36
Realty	2610	-0.80
Consumer Dur	22698	-1.74
Metal	15622	-0.63
Oil & Gas	16290	1.16
Teck	6890	-1.02

Index	FY17	FY18E	FY19E
Sensex EPS	1457	1715	1938
P/E	23	20	17
Nifty EPS	458	556	617
P/E	23	19	17

Trading activity in cash Rs Cr			
Date 30 January	Net	MTD	FY17
FII	-105	9700	-67675
DII	-282	-551	89135

Global Indices	Current Value	%1D
DowJones	26076	-1.37
Nasdaq	7402	-0.86
DAX	13197	-0.96
Nikkei 225	23284	-0.03
FTSE 100	7587	-1.10
Hang Seng	32586	-0.06
Shanghai	3469	-0.53
Straits Times	3534	-0.39

Forex Rate		
USD/INR	63.83	0.08%
EUR/INR	79.41	0.28%
GBP/INR	90.09	0.33%
JPY/INR	58.85	0.23%

G-Sec Yield		
	Price	Change%
1yr Bond Yield	6.74	-0.69
10yr Bond Yield	7.43	-0.09

Market Outlook

Indian markets are expected to open with a negative note backed by unconstructive global sentiments and expect consolidation at the current levels. We expect budget expectations are already discounted in the current levels. On overall basis direction for the markets are flat. Nifty major supports near 10750 with resistance near 11200.

Top Domestic News

- Ashoka Buildcon- Q3FY18-YoY Revenue up 25.7 percent at 659cr vs 524cr EBITDA up 30 percent at 80cr vs 61.6cr OPM at 12.1 percent vs 11.7 percent Pat up 21.5 percent at 51.9cr vs 42.7cr BOT revenue up 45 percent at 8.7cr Construction and contract revenue up 26 percent at 614cr
- IFB Industries Q3FY18-YoY Revenue up 20 percent at 549cr vs 458cr EBITDA up 36cr vs 30.75cr OPM at 6.6 percent vs 6.7 percent Pat up 11.6 percent 17.2cr vs 15.4cr
- Apollo Pipes- Q3FY18 YoY EPS at 4.07 vs 1.8 Revenue up 50 percent at 74.7cr vs 49.8cr EBITDA up 75 percent at 8.5cr vs 4.8cr OPM at 11.3 percent vs 9.7 percent Pat up 126 percent at 4.48cr vs 1.98cr
- JK Paper- Q3FY18-YoY EPS at 4.02 vs 3.35 Revenue up 24 percent at 791cr vs 638cr EBITDA up 42 percent at 154cr OPM at 19.5 percent vs 16.9 percent Pat up 23 percent at 69cr vs 57cr
- Idea Cellular gets shareholders' nod for issue of shares on preferential basis
- Syndicate Bank board meet on Feb 2 to approve revised capital plan pf bank from earlier Rs 3500 cr to Rs 3990cr through QIP/ Rights issue/ Follow on public offer
- NCC's QIP closed today and issue price approved at Rs 123
- Welspun Enterprises acquired 49% stake in the Project for Four laning of Chikhali - Tarsod (Package-IIA) section of NH-6 from km. 360.000 to km.422.700 from Vishvaraj Group for a consideration of Rs 83.3 million
- Piramal Enterprises eyeing debt-laden firms across sectors- mint
- Minda Corp seeks partner to make braking systems
- Idea partners Karbonn to offer cashbacks on smartphones, feature phones - FE
- Bajaj Auto workers go on indefinite hunger strike at Akurdi and Chakan plants - mint
- M&M signed share subscription agreement for 26 percent subscription in MITRA Agro Equipments
- Deepak Nitrite raised around Rs 149 crore from qualified institutional placement.
- Videocon Industries to Challenge NCLT Proceedings Against Itself
- MCX: SEBI disposes off cases against founders without penalty

Global News

US stocks fell for a second straight day on Tuesday, with the Dow registering its biggest two-day drop since September 2016, pressured by healthcare stocks and rising bond yields. The Dow Jones Industrial Average fell 362.59 points, or 1.37 %, to 26,076.89, the S&P 500 lost 31.1 points, or 1.09 %, to 2,822.43 and the Nasdaq Composite dropped 64.02 points, or 0.86 %, to 7,402.48, Reuters reported. Asian indexes traded lower across the board on Wednesday after Wall Street sold off for a second consecutive day, although losses in the region were initially slighter than those seen stateside. The Nikkei 225 edged down 0.04 % while the Kospi was flat, CNBC reported.

NSE Top Gainers

Script	LTP	%1D
HINDPETRO	391.50	4.36
IOC	416.00	4.09
BPCL	480.90	2.36
HEROMOTOCO	3682.60	1.12
COALINDIA	305.00	1.08

NSE Top Losers

Script	LTP	%1D
EICHERMOTOR	26675.00	-2.84
KOTAKBANK	1085.80	-2.63
INFRADEL	345.00	-2.38
BOSCHLTD	19433.00	-2.24
BAJFINANCE	1677.00	-2.23

BSE Top Gainers

Script	LTP	%1D
RCOM	30.10	10.46
KPIT	219.30	4.80
HINDPETRO	392.30	4.56
BAKKRISHIND	1157.00	4.33
IOC	415.60	4.23

BSE Top Losers

Script	LTP	%1D
WOCKPHARMA	825.55	-9.18
PCJEWELLER	520.85	-7.61
JUSTDIAL	520.00	-7.46
EMAMILTD	1142.10	-7.35
INTELLECT	162.40	-7.23

Technical View

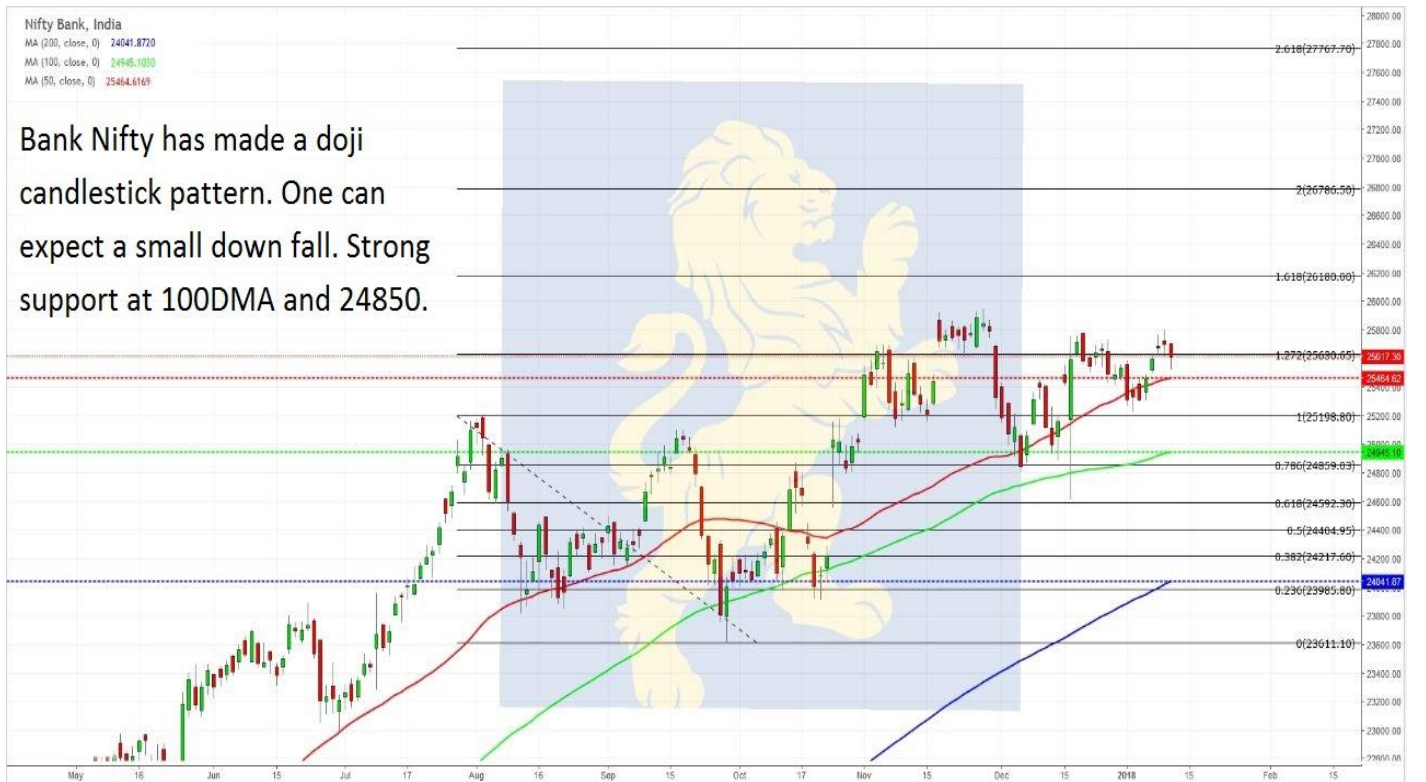
Nifty 50, India
 MA (200, close, 0) 9866.8793
 MA (100, close, 0) 10180.2700
 MA (50, close, 0) 10351.4070

Nifty has achieved DOUBLE BOTTOM patterns target. Nifty made a doji candlestick pattern. It is very important that Nifty closes above 10660 for more bullish upmove.



Nifty Bank, India
 MA (200, close, 0) 24041.8720
 MA (100, close, 0) 24945.1030
 MA (50, close, 0) 25464.6169

Bank Nifty has made a doji candlestick pattern. One can expect a small down fall. Strong support at 100DMA and 24850.



Msearch



Disclaimer: The views expressed / recommendations made in this report are based on Technical Analysis techniques and could be at variance with the company's / group's views based on fundamental research. The report and information contained herein is strictly confidential and meant solely for the selected recipient and may not be altered in any way, transmitted to, copied or distributed, in part or in whole, to any other person or to the media or reproduced in any form, without prior written consent. This report and information herein is solely for informational purpose and may not be used or considered as an offer document or solicitation of offer to buy or sell or subscribe for securities or other financial instruments. Nothing in this report constitutes investment, legal, accounting and tax advice or a representation that any investment or strategy is suitable or appropriate to your specific circumstances. The securities discussed and opinions expressed in this report may not be suitable for all investors, who must make their own investment decisions, based on their own investment objectives, financial positions and needs of specific recipient. This may not be taken in substitution for the exercise of independent judgment by any recipient. Each recipient of this document should make such investigations as it deems necessary to arrive at an independent evaluation of an investment in the securities of companies referred to in this document (including the merits and risks involved), and should consult its own advisors to determine the merits and risks of such an investment. The investment discussed or views expressed may not be suitable for all investors. Certain transactions -including those involving futures, options another derivatives as well as non-investment grade securities - involve substantial risk and are not suitable for all investors. No representation or warranty, express or implied, is made as to the accuracy, completeness or fairness of the information and opinions contained in this document. The Disclosures of Interest Statement incorporated in this document is provided solely to enhance the transparency and should not be treated as endorsement of the views expressed in the report. This information is subject to change without any prior notice. The Company reserves the right to make modifications and alternations to this statement as may be required from time to time without any prior approval. MEHTA EQUITIES LTD, its affiliates, their directors and the employees may from time to time, effect or have effected an own account transaction in, or deal as principal or agent in or for the securities mentioned in this document. They may perform or seek to perform investment banking or other services for, or solicit investment banking or other business from, any company referred to in this report. Each of these entities functions as a separate, distinct and independent of each other. The recipient should take this into account before interpreting the document. This report has been prepared on the basis of information that is already available in publicly accessible media or developed through analysis of MEHTA EQUITIES LTD. The views expressed are those of the analyst and the Company may or may not subscribe to all the views expressed therein. This document is being supplied to you solely for your information and may not be reproduced, redistributed or passed on, directly or indirectly, to any other person or published, copied, in whole or in part, for any purpose. Neither this document nor any copy of it may be taken or transmitted into the United State (to U.S. Persons), Canada, or Japan or distributed, directly or indirectly, in the United States or Canada or distributed or redistributed in Japan or to any resident thereof. This report is not directed or intended for distribution to, or use by, any person or entity who is a citizen or resident of or located in any locality, state, country or other jurisdiction, where such distribution, publication, availability or use would be contrary to law, regulation or which would subject MEHTA EQUITIES LTD to any registration or licensing requirement within such jurisdiction. The securities described herein may or may not be eligible for sale in all jurisdictions or to certain category of investors. Persons in whose possession this document may come are required to inform themselves of and to observe such restriction. Neither the Firm, not its directors, employees, agents or representatives shall be liable for any damages whether direct or indirect, incidental, special or consequential including lost revenue or lost profits that may arise from or in connection with the use of the information.

MEHTA EQUITIES LTD

BSE: - Membership Clearing No. 122 - SEBI Regn. No. INB010683856, NSE: - Membership Clearing No. 13512- SEBI Regn. No. INB231351231, NSE FO SEBI Regn. No. INF231351231, CIN No: U65990MH1994PLC078478
MSEI: - Membership Clearing No. 51800 - SEBI Regn. No. INB261351234

Mehta Equities Limited, 903, 9th floor, Lodha Supremus, Dr.E. Moses Road, Worli Naka, Worli, Mumbai 400 018, India
Tel: +91 22 6150 7101, Fax: +91 22 6150 7102

Email: info@mehtagroup.in, Website: www.mehtagroup.in