

Indices	CMP	%1D
Sensex	34413	0.97
Nifty	10576	0.96
BSE-Midcap	16649	1.82
BSE-Smallcap	18131	2.25
SGX Nifty	10333	-2.21

Sector	CMP	%1D
Capital Goods	19381	1.44
Realty	2461	2.51
Consumer Dur	21170	1.32
Metal	14913	1.35
Oil & Gas	15653	-0.25
Teck	6634	1.41

Index	FY17	FY18E	FY19E
Sensex EPS	1469	1785	1958
P/E	24	20	18
Nifty EPS	466	575	623
P/E	24	19	18

Trading activity in cash Rs Cr			
Date 8 February	Net	MTD	FY18
FII	-2297	-4858	-72669
DII	2373	4830	95259

Global Indices	Current Value	%1D
DowJones	24766	-0.51
Nasdaq	7051	-0.91
DAX	12448	-1.14
Nikkei 225	21890	1.12
FTSE 100	7221	-0.80
Hang Seng	30451	0.42
Shanghai	3262	-1.44
Straits Times	3415	0.94

Forex Rate		
USD/INR	64.40	-0.06%
EUR/INR	78.87	-0.95%
GBP/INR	89.54	0.02%
JPY/INR	58.76	-0.56%

G-Sec Yield		
	Price	Change%
1yr Bond Yield	6.68	0.45
10yr Bond Yield	7.47	-0.80

Market Outlook

Indian markets are expected to open with a negative note backed by unconstructive global sentiments. On overall basis direction for the markets are negative. Nifty major supports near 10300. We advise investors to wait and watch strategy for the time being.

Top Domestic News

- **Results Today:** SBI, Bata, Bank of Baroda, BPCL, India Cements, Marico, MOIL, ONGC, Sobha, Sun TV, Tata Steel, UCO Bank.
- Deepak Fert Q3 Revenue (GU)57.8 percent At Rs 1,644.9 Cr vs Rs 1,042.6 Cr (YoY) Net Profit (GU)11.7 percent At Rs 57 Cr Vs Rs 51.3 Cr (YoY)
- Saurashtra Cement Revenue up 27 percent at 142cr EBITDA at 6cr vs LOSS of 17cr PAT of 3cr vs LOSS of 16.4cr.
- Talwalkars Better-Q3FY18 YOY Revenue down 10 percent at 54.8cr vs 49.7cr EBITDA down 10 percent at 24.6cr Margins flat at 44.9 percent PAT up 28 percent at 5.5cr.
- Butterfly Gandhimathi Appliances- Q3FY18 YOY Revenue up 58 percent at 141cr EBITDA profit at 8.6cr vs Loss of -19.4cr PAT at 1.6cr vs Loss of 26cr .
- Excel Crop care- Q3FY18-YoY Revenue up 45 percent at 258.6cr EBITDA up 193 percent at 21.3cr OPM at 8.2 percent vs 4 percent PAT up 392 percent at 12.8cr.
- Trent to raise funds through issue of commercial paper upto an amount not exceeding Rs 200cr.
- Mr Malvinder Singh and Shivinder Singh have tendered resignation from the directorships of Fortis.
- Indiabulls Real Estate to meet on Feb 14 in relation to demerger of residential and commercial biz.
- Indian Bank change in overnight MCLR for various tenors.
- Vijaya Bank issue of equity shares to govt on preferential basis for a amount upto Rs 1277cr.
- Canara Bank to raise upto Rs 1000cr via rights issue.
- Allahabad Bank - Staff allege coercion in bank's share sale process.

Global News

US stocks plunged around 4 % on Thursday in another dramatic session, confirming a correction that has thrown the market's nearly nine-year bull run off course. The Dow Jones Industrial Average fell 1,032.89 points, or 4.15 %, to 23,860.46, the S&P 500 lost 100.66 points, or 3.75 %, to 2,581 and the Nasdaq Composite dropped 274.83 points, or 3.9 %, to 6,777.16, Reuters reported. Asian shares took a tumble early on Friday, taking cues from US indexes which extended sharp losses in the last session. Japan's Nikkei 225 fell 2.95 % in early trade, with losses seen in most sectors. The Kospi lost 2.16 %, with most sectors trading in negative territory, CNBC reported.

NSE Top Gainers

Script	LTP	%1D
CIPLA	616.00	8.21
AMBUJACEM	266.00	7.13
SUNPHARMA	584.90	6.44
INFRATEL	350.30	3.47
IBULHSGFIN	1317.25	3.39

NSE Top Losers

Script	LTP	%1D
AUOPHARMA	601.00	-2.45
NTPC	163.75	-1.03
ONGC	188.75	-0.66
ADANI PORTS	405.00	-0.49
ITC	273.90	-0.45

BSE Top Gainers

Script	LTP	%1D
HFCL	28.40	10.72
DEN	112.50	8.75
GHCL	312.35	8.51
SUNTV	1005.95	8.04
CIPLA	613.70	7.83

BSE Top Losers

Script	LTP	%1D
HEXAWARE	337.45	-5.01
VAKRANGEE	192.40	-4.99
SWANENGY	195.75	-4.47
JUBILANT	968.40	-3.79
UFLEX	379.00	-3.61

Technical View

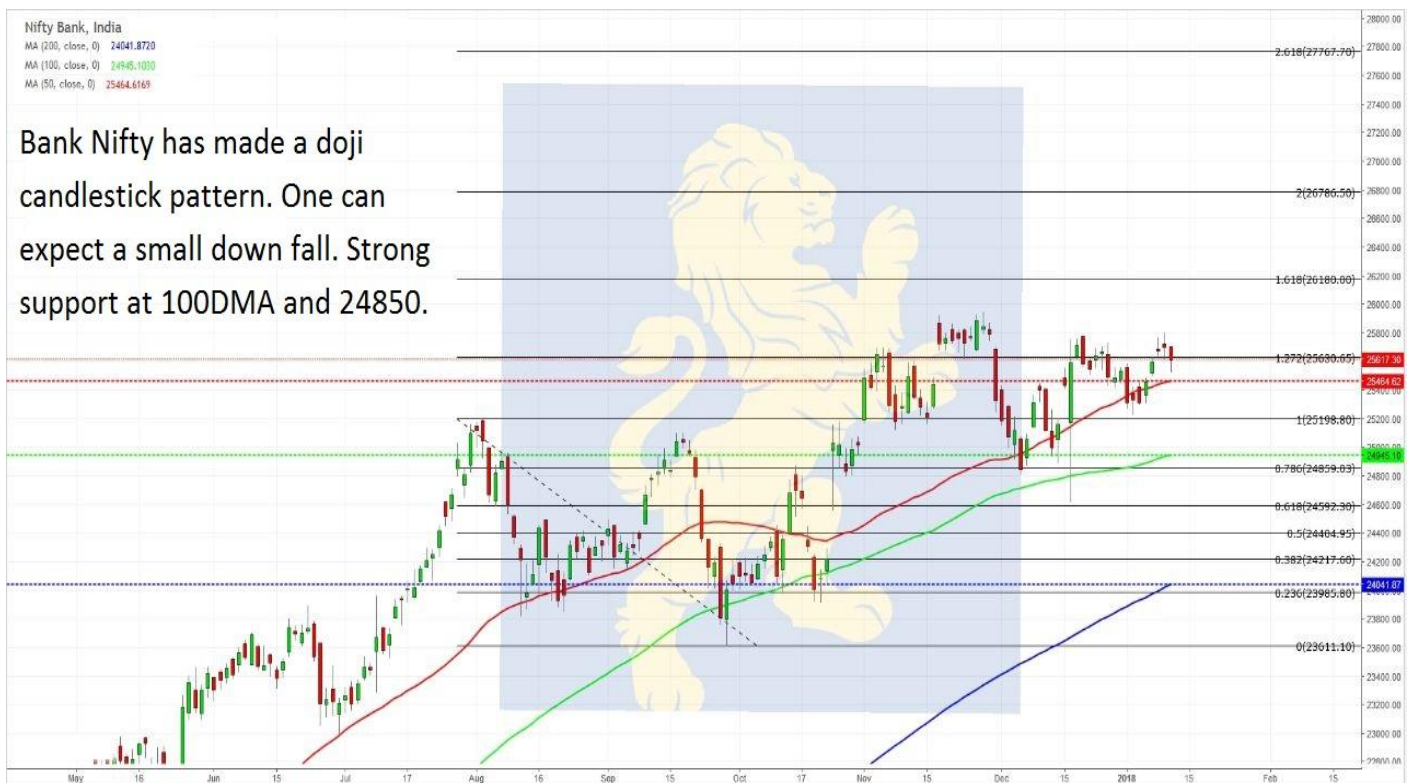
Nifty 50, India
 MA (200, close, 0) 9866.8793
 MA (100, close, 0) 10180.2700
 MA (50, close, 0) 10351.4070

Nifty has achieved DOUBLE BOTTOM patterns target. Nifty made a doji candlestick pattern. It is very important that Nifty closes above 10660 for more bullish upmove.



Nifty Bank, India
 MA (200, close, 0) 24041.8720
 MA (100, close, 0) 24945.1030
 MA (50, close, 0) 25464.6169

Bank Nifty has made a doji candlestick pattern. One can expect a small down fall. Strong support at 100DMA and 24850.



Msearch



Disclaimer: The views expressed / recommendations made in this report are based on Technical Analysis techniques and could be at variance with the company's / group's views based on fundamental research. The report and information contained herein is strictly confidential and meant solely for the selected recipient and may not be altered in any way, transmitted to, copied or distributed, in part or in whole, to any other person or to the media or reproduced in any form, without prior written consent. This report and information herein is solely for informational purpose and may not be used or considered as an offer document or solicitation of offer to buy or sell or subscribe for securities or other financial instruments. Nothing in this report constitutes investment, legal, accounting and tax advice or a representation that any investment or strategy is suitable or appropriate to your specific circumstances. The securities discussed and opinions expressed in this report may not be suitable for all investors, who must make their own investment decisions, based on their own investment objectives, financial positions and needs of specific recipient. This may not be taken in substitution for the exercise of independent judgment by any recipient. Each recipient of this document should make such investigations as it deems necessary to arrive at an independent evaluation of an investment in the securities of companies referred to in this document (including the merits and risks involved), and should consult its own advisors to determine the merits and risks of such an investment. The investment discussed or views expressed may not be suitable for all investors. Certain transactions -including those involving futures, options another derivatives as well as non-investment grade securities - involve substantial risk and are not suitable for all investors. No representation or warranty, express or implied, is made as to the accuracy, completeness or fairness of the information and opinions contained in this document. The Disclosures of Interest Statement incorporated in this document is provided solely to enhance the transparency and should not be treated as endorsement of the views expressed in the report. This information is subject to change without any prior notice. The Company reserves the right to make modifications and alternations to this statement as may be required from time to time without any prior approval. MEHTA EQUITIES LTD, its affiliates, their directors and the employees may from time to time, effect or have effected an own account transaction in, or deal as principal or agent in or for the securities mentioned in this document. They may perform or seek to perform investment banking or other services for, or solicit investment banking or other business from, any company referred to in this report. Each of these entities functions as a separate, distinct and independent of each other. The recipient should take this into account before interpreting the document. This report has been prepared on the basis of information that is already available in publicly accessible media or developed through analysis of MEHTA EQUITIES LTD. The views expressed are those of the analyst and the Company may or may not subscribe to all the views expressed therein. This document is being supplied to you solely for your information and may not be reproduced, redistributed or passed on, directly or indirectly, to any other person or published, copied, in whole or in part, for any purpose. Neither this document nor any copy of it may be taken or transmitted into the United State (to U.S. Persons), Canada, or Japan or distributed, directly or indirectly, in the United States or Canada or distributed or redistributed in Japan or to any resident thereof. This report is not directed or intended for distribution to, or use by, any person or entity who is a citizen or resident of or located in any locality, state, country or other jurisdiction, where such distribution, publication, availability or use would be contrary to law, regulation or which would subject MEHTA EQUITIES LTD to any registration or licensing requirement within such jurisdiction. The securities described herein may or may not be eligible for sale in all jurisdictions or to certain category of investors. Persons in whose possession this document may come are required to inform themselves of and to observe such restriction. Neither the Firm, not its directors, employees, agents or representatives shall be liable for any damages whether direct or indirect, incidental, special or consequential including lost revenue or lost profits that may arise from or in connection with the use of the information.

MEHTA EQUITIES LTD

BSE: - Membership Clearing No. 122 - SEBI Regn. No. INB010683856, NSE: - Membership Clearing No. 13512- SEBI Regn. No. INB231351231, NSE FO SEBI Regn. No. INF231351231, CIN No: U65990MH1994PLC078478
MSEI: - Membership Clearing No. 51800 - SEBI Regn. No. INB261351234

Mehta Equities Limited, 903, 9th floor, Lodha Supremus, Dr.E. Moses Road, Worli Naka, Worli, Mumbai 400 018, India
Tel: +91 22 6150 7101, Fax: +91 22 6150 7102

Email: info@mehtagroup.in, Website: www.mehtagroup.in