

Indices	CMP	%1D
Sensex	33844	0.42
Nifty	10397	0.36
BSE-Midcap	16411	-0.05
BSE-Smallcap	17800	-0.17
SGX Nifty	10340	-0.41

Sector	CMP	%1D
Capital Goods	18735	-0.58
Realty	2402	-0.79
Consumer Dur	21117	-0.57
Metal	14867	-1.27
Oil & Gas	15456	0.42
Teck	6655	1.79

Index	FY17	FY18E	FY19E
Sensex EPS	1469	1785	1958
P/E	24	20	18
Nifty EPS	466	575	623
P/E	24	19	18

Trading activity in cash Rs Cr			
Date 21 February	Net	MTD	FY18
FII	-1214	-12015	-79826
DII	1375	11183	101612

Global Indices	Current Value	%1D
DowJones	25050	0.34
Nasdaq	7273	0.53
DAX	12435	-0.42
Nikkei 225	21970	0.21
FTSE 100	7269	0.31
Hang Seng	31431	1.78
Shanghai	3199	0.45
Straits Times	3516	1.13

Forex Rate		
USD/INR	64.82	-0.03%
EUR/INR	79.91	-0.16%
GBP/INR	90.27	-0.47%
JPY/INR	60.34	-0.32%

G-Sec Yield	Price	Change%
1yr Bond Yield	6.69	-0.13
10yr Bond Yield	7.71	0.48

Market Outlook

Indian markets are expected to open with a flat positive note backed by mixed global sentiments. On overall basis direction for the markets are on consolidation note. Nifty major supports near 10200- 10300. We advise investors to start accumulating quality counters with wait and watch strategy for the time being.

Top Domestic News

- Aurobindo Pharma, Ambuja Cements & Bosch to be excluded from Nifty 50 from April 2.
- Bajaj Finserv, Grasim & Titan to be included in Nifty 50 from April 2.
- Siemens board approves sale of mobility division and rail traction drives business.
- Allahabad Bank says has an exposure of Rs 516.79cr to Rotomac and the same has been classified as an NPA.
- Vardhman Special Steels approves issue of 35,72,000 shares via QIP at Rs140 per share.
- PNB - CARE places rating on various bonds of the bank under credit watch with developing implications.
- Capital First raises Rs 102cr via issue of NCDs on private placement basis.
- Cyient reduces investment limit to 49% from 100% for non residents.
- Bank of India clarifies that Rotomac loan has been classified as an NPA in 2015-16.
- UCO Bank board approves preferential issue to govt for a sum of Rs 6507cr at Rs31.16/ share
- USL set to auction Vijay Mallya's Rs 300cr Mumbai house.
- JM Financial to divest 32% stake in sona BLW.
- Tata group may sell Tata Motors subsidiary Tata autocomp systems which is into auto part.
- SEBI revives old case against Gitanjali gems.
- Dredging Corp - Staff keen to buy out govt stake.
- IDFC Bank launches operation in Kerala.
- PNB - Govt says bank needs to sell assets to meet funding needs.
- PNB Govt considering more capital to PNB from the earlier commitment of Rs 5473cr under PSU bank recap.

Global News

US stocks closed lower on Wednesday in a rocky session after the release of the minutes from the Federal Reserve's January meeting pushed yields on the benchmark 10-year US Treasury note to a four-year high. The Dow Jones Industrial Average fell 166.97 points, or 0.67 %, to 24,797.78, the S&P 500 lost 14.93 points, or 0.55 %, to 2,701.33 and the Nasdaq Composite dropped 16.08 points, or 0.22 %, to 7,218.23, Reuters reported. Asia markets fell in morning trade on Thursday, after a lower finish in US stocks following the release of the latest Federal Reserve minutes. Australia's ASX 200 opened higher but retraced gains to trade down 0.14 %. Japan's Nikkei 225 was down 1.21 % in early trade. The Topix index was also lower by 1.03 %. In South Korea, the Kospi slipped 0.55 %, CNBC reported.

NSE Top Gainers

Script	LTP	%1D
HCLTECH	945.00	4.14
TECHM	594.50	3.54
TCS	3042.35	3.31
ITC	268.05	1.82
EICHERMOTOR	27400.00	1.80

NSE Top Losers

Script	LTP	%1D
SUNPHARMA	523.90	-6.36
HINDALCO	241.05	-3.11
BAJFINANCE	1600.00	-2.36
INDUSINDBK	1597.00	-1.58
TATAMOTORS	364.05	-1.42

BSE Top Gainers

Script	LTP	%1D
LTTS	1365.80	7.76
GRUH	545.10	7.53
IDBI	70.35	6.11
JUBILANT	986.95	6.04
FSL	48.35	5.68

BSE Top Losers

Script	LTP	%1D
SUNPHARMA	524.75	-6.19
ASTRAMICRO	89.90	-5.91
RELIGARE	57.00	-5.00
VAKRANGEE	210.50	-4.99
HDIL	49.10	-4.66

Technical View

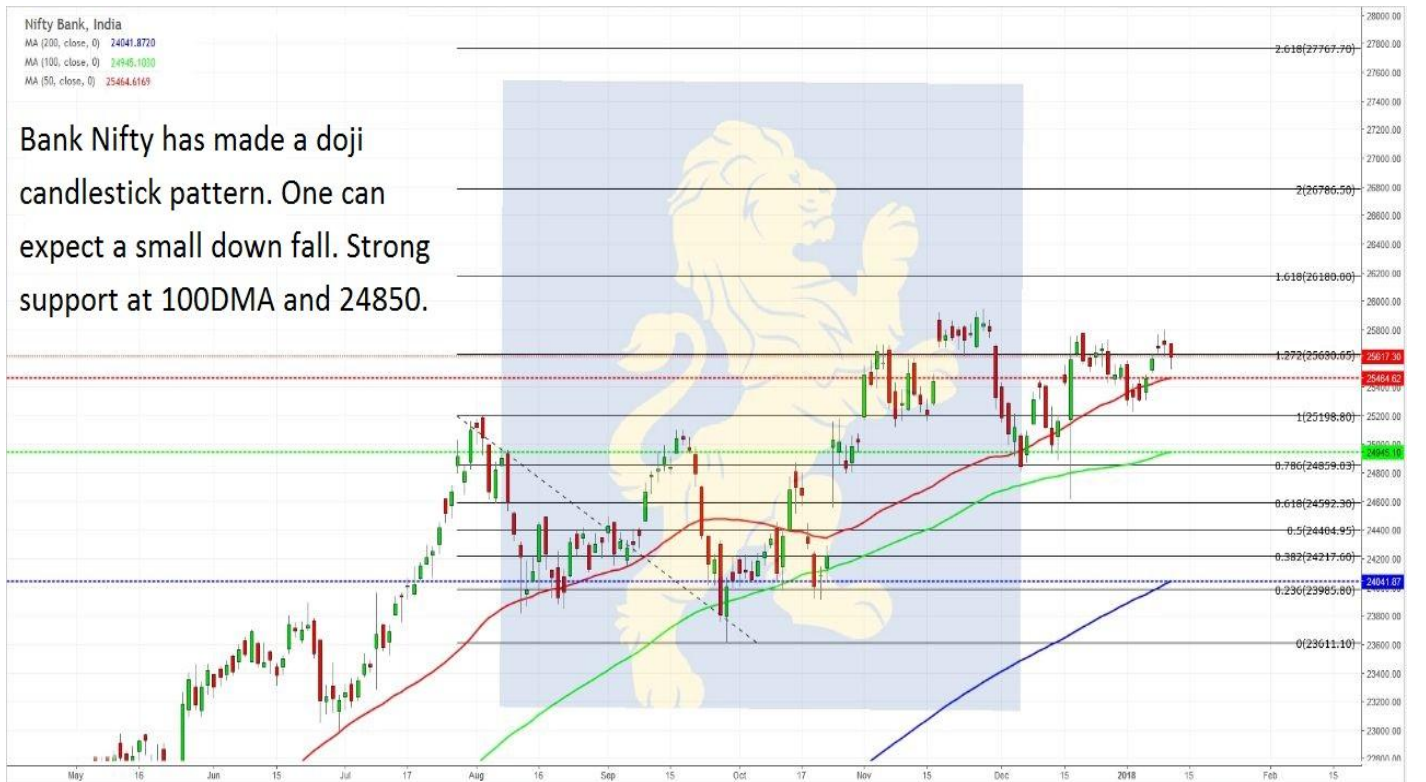
Nifty 50, India
 MA (200, close, 0) 9866.8793
 MA (100, close, 0) 10180.2700
 MA (50, close, 0) 10351.4070

Nifty has achieved DOUBLE BOTTOM patterns target. Nifty made a doji candlestick pattern. It is very important that Nifty closes above 10660 for more bullish upmove.



Nifty Bank, India
 MA (200, close, 0) 24041.8720
 MA (100, close, 0) 24945.1030
 MA (50, close, 0) 25464.6169

Bank Nifty has made a doji candlestick pattern. One can expect a small down fall. Strong support at 100DMA and 24850.



Msearch



Disclaimer: The views expressed / recommendations made in this report are based on Technical Analysis techniques and could be at variance with the company's / group's views based on fundamental research. The report and information contained herein is strictly confidential and meant solely for the selected recipient and may not be altered in any way, transmitted to, copied or distributed, in part or in whole, to any other person or to the media or reproduced in any form, without prior written consent. This report and information herein is solely for informational purpose and may not be used or considered as an offer document or solicitation of offer to buy or sell or subscribe for securities or other financial instruments. Nothing in this report constitutes investment, legal, accounting and tax advice or a representation that any investment or strategy is suitable or appropriate to your specific circumstances. The securities discussed and opinions expressed in this report may not be suitable for all investors, who must make their own investment decisions, based on their own investment objectives, financial positions and needs of specific recipient. This may not be taken in substitution for the exercise of independent judgment by any recipient. Each recipient of this document should make such investigations as it deems necessary to arrive at an independent evaluation of an investment in the securities of companies referred to in this document (including the merits and risks involved), and should consult its own advisors to determine the merits and risks of such an investment. The investment discussed or views expressed may not be suitable for all investors. Certain transactions -including those involving futures, options another derivatives as well as non-investment grade securities - involve substantial risk and are not suitable for all investors. No representation or warranty, express or implied, is made as to the accuracy, completeness or fairness of the information and opinions contained in this document. The Disclosures of Interest Statement incorporated in this document is provided solely to enhance the transparency and should not be treated as endorsement of the views expressed in the report. This information is subject to change without any prior notice. The Company reserves the right to make modifications and alternations to this statement as may be required from time to time without any prior approval. MEHTA EQUITIES LTD, its affiliates, their directors and the employees may from time to time, effect or have effected an own account transaction in, or deal as principal or agent in or for the securities mentioned in this document. They may perform or seek to perform investment banking or other services for, or solicit investment banking or other business from, any company referred to in this report. Each of these entities functions as a separate, distinct and independent of each other. The recipient should take this into account before interpreting the document. This report has been prepared on the basis of information that is already available in publicly accessible media or developed through analysis of MEHTA EQUITIES LTD. The views expressed are those of the analyst and the Company may or may not subscribe to all the views expressed therein. This document is being supplied to you solely for your information and may not be reproduced, redistributed or passed on, directly or indirectly, to any other person or published, copied, in whole or in part, for any purpose. Neither this document nor any copy of it may be taken or transmitted into the United State (to U.S. Persons), Canada, or Japan or distributed, directly or indirectly, in the United States or Canada or distributed or redistributed in Japan or to any resident thereof. This report is not directed or intended for distribution to, or use by, any person or entity who is a citizen or resident of or located in any locality, state, country or other jurisdiction, where such distribution, publication, availability or use would be contrary to law, regulation or which would subject MEHTA EQUITIES LTD to any registration or licensing requirement within such jurisdiction. The securities described herein may or may not be eligible for sale in all jurisdictions or to certain category of investors. Persons in whose possession this document may come are required to inform themselves of and to observe such restriction. Neither the Firm, not its directors, employees, agents or representatives shall be liable for any damages whether direct or indirect, incidental, special or consequential including lost revenue or lost profits that may arise from or in connection with the use of the information.

MEHTA EQUITIES LTD

BSE: - Membership Clearing No. 122 - SEBI Regn. No. INB010683856, NSE: - Membership Clearing No. 13512- SEBI Regn. No. INB231351231, NSE FO SEBI Regn. No. INF231351231, CIN No: U65990MH1994PLC078478
MSEI: - Membership Clearing No. 51800 - SEBI Regn. No. INB261351234

Mehta Equities Limited, 903, 9th floor, Lodha Supremus, Dr.E. Moses Road, Worli Naka, Worli, Mumbai 400 018, India
Tel: +91 22 6150 7101, Fax: +91 22 6150 7102

Email: info@mehtagroup.in, Website: www.mehtagroup.in