

Indices	CMP	%1D
Sensex	34010	-0.84
Nifty	10452	-0.88
BSE-Midcap	16602	-1.20
BSE-Smallcap	18035	-1.22
SGX Nifty	10462	0.14

Sector	CMP	%1D
Capital Goods	19200	-1.33
Realty	2465	-1.44
Consumer Dur	20961	-0.75
Metal	15124	-1.58
Oil & Gas	15546	-1.19
Teck	6538	-0.18

Index	FY17	FY18E	FY19E
Sensex EPS	1469	1785	1958
P/E	24	20	18
Nifty EPS	466	575	623
P/E	24	19	18

Trading activity in cash Rs Cr			
Date 16 February	Net	MTD	FY18
FII	-1065	-9056	-76867
DII	1127	7785	98214

Global Indices	Current Value	%1D
DowJones	25223	0.09
Nasdaq	7260	0.06
DAX	12410	0.52
Nikkei 225	21720	1.18
FTSE 100	7280	0.63
Hang Seng	31115	1.93
Shanghai	3199	0.45
Straits Times	3443	1.18

Forex Rate		
USD/INR	64.27	0.44%
EUR/INR	80.26	0.47%
GBP/INR	90.41	0.51%
JPY/INR	60.56	0.87%

G-Sec Yield	Price	Change%
1yr Bond Yield	6.68	-0.43
10yr Bond Yield	7.58	0.16

Market Outlook

Indian markets are expected to open with a flat positive note backed by mixed global sentiments. On overall basis direction for the markets are on consolidation note. Nifty major supports near 10300. We advise investors to start accumulating quality counters and watch strategy for the time being.

Top Domestic News

- PNB concall -Bank is going through some problems which we will fix. Problems were first detected in third week of January. We immediately went to CBI & ED upon discovering the fraud. This is a standalone case; only one branch has reported such a case.
- Tata Steel emerges highest bidder for Bhushan Steel. Tata Steel offered a package of over Rs 40,000 crore for Bhushan Steel.
- Binani Cement Being Sold By Lenders As Part Of Insolvency Proceedings. UltraTech, Dalmia Bharat, JSW Are Key Bidders For Binani Cement. UltraTech, Dalmia Tendered Higher Bids After Lenders Allowed Rebidding.
- EGM on 16 March 2018: CRISIL updates ratings of various bonds to "Rating watch with developing implications"
- South Indian Bank revises MCLR wef 20th February 2018.
- KPR Mills to consider buy back of shares on 22nd February.
- Natco Pharma says USFDA completes inspection of Mekaguda facility with ZERO observations.
- Infosys signs agreement to divest its entire investment from OnMobile Systems for USD 2,498,756
- PVR says 'amicably resolved' dispute with Elan group over development of multiplexes in Gurugram
- SBI approved issue price at 300.8/share for pref issue to the government.
- ARSS Infra wins two work orders worth Rs121cr.
- IOC to invest Rs 70,000 crore to expand refining capacity.
- NTPC eyes 100 percent equity in some JVs with utilities.
- ONGC Videsh to bid for Iran's South Azadegan oilfield.
- Fortis Healthcare, Religare Enterprises - Government has ordered a Serious Fraud Investigation Office probe: ToI
- PowerGrid emerges as lowest bidder for Rs 1,000 crore transmission project-PNB looking to sell real estate assets.

Global News

The **S&P 500** rose marginally on Friday to mark its biggest weekly increase in five years, although earlier gains evaporated after the indictment of Russians for meddling in the 2016 presidential election sent investors into defensive mode before a long weekend. The Dow Jones Industrial Average rose 0.08 % to end at 25,219.38 points, while the S&P 500 gained 0.04 % to 2,732.22. The Nasdaq Composite dropped 0.23 % to 7,239.47, Reuters reported. **Asian markets** rose in morning trade on Monday, after the US's S&P 500 extended its winning streak on Friday to six days. Markets in the Greater China region remain closed for the Lunar New Year holiday. Japan's Nikkei 225 rose 1.13 % in early trade, while the Topix index was up 1.2 %. South Korea's Kospi index gained 0.87 %, CNBC reported.

NSE Top Gainers

Script	LTP	%1D
AMBUJACEM	256.50	1.22
KOTAKBNK	1052.00	0.95
INFY	1124.65	0.92
ASIANPAINT	1145.00	0.84
DRREDDY	2212.00	0.74

NSE Top Losers

Script	LTP	%1D
EICHERMOTOR	27401.00	-3.31
IBULHSGFIN	1269.00	-3.30
TECHM	585.90	-3.26
SBIN	271.40	-2.62
YESBANK	312.00	-2.44

BSE Top Gainers

Script	LTP	%1D
PCJEWELLER	379.75	6.55
VAKRANGEE	245.45	4.98
BBTC	1519.90	4.86
RELIGARE	60.20	4.42
IPCALAB	625.25	3.58

BSE Top Losers

Script	LTP	%1D
WELCORP	158.75	-5.76
APOLLOHOSP	1138.20	-5.75
SUNTV	924.00	-5.42
JINDALSTEEL	251.70	-5.22
MAXINDIA	99.35	-5.06

Technical View

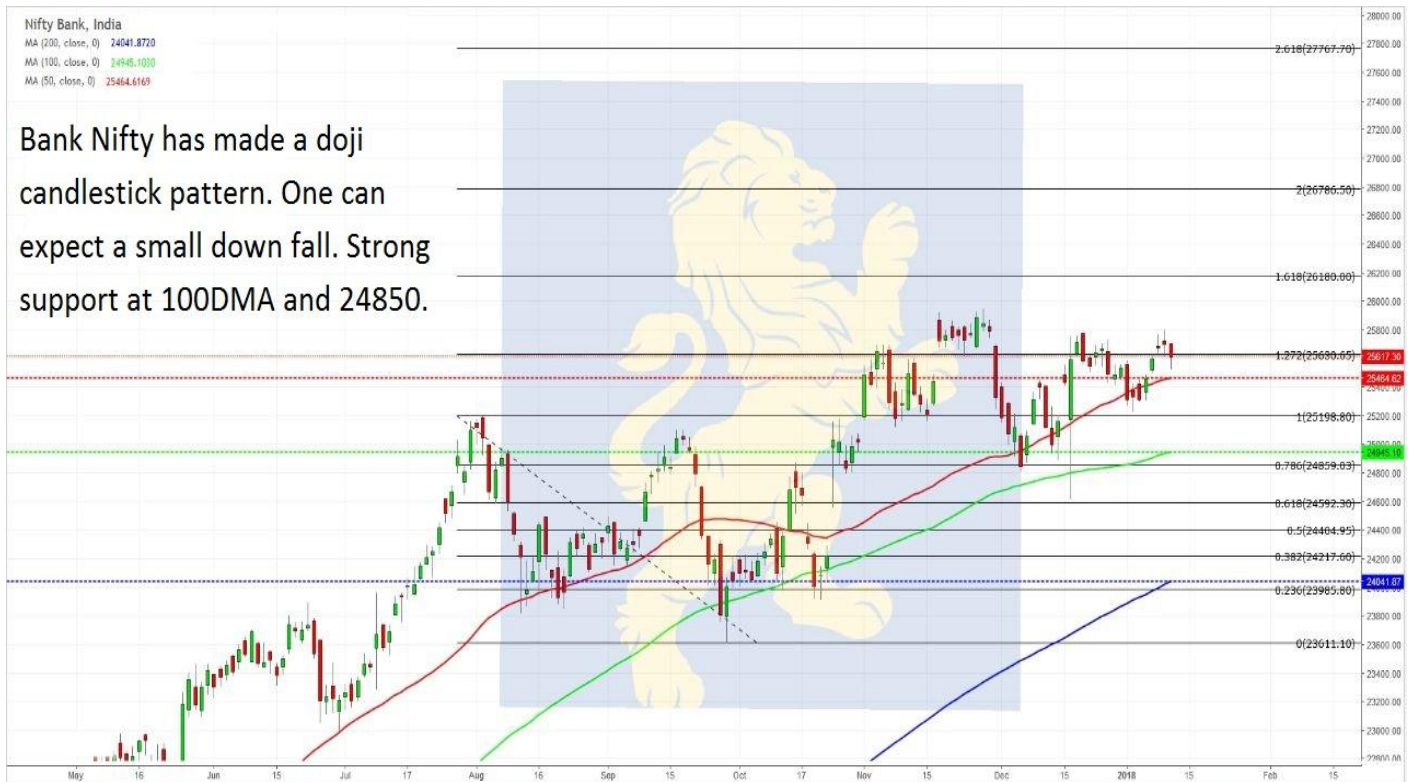
Nifty 50, India
 MA (200, close, 0) 9866.8793
 MA (100, close, 0) 10180.2700
 MA (50, close, 0) 10351.4070

Nifty has achieved DOUBLE BOTTOM patterns target. Nifty made a doji candlestick pattern. It is very important that Nifty closes above 10660 for more bullish upmove.



Nifty Bank, India
 MA (200, close, 0) 24041.8720
 MA (100, close, 0) 24945.1030
 MA (50, close, 0) 25464.6169

Bank Nifty has made a doji candlestick pattern. One can expect a small down fall. Strong support at 100DMA and 24850.



Msearch



Disclaimer: The views expressed / recommendations made in this report are based on Technical Analysis techniques and could be at variance with the company's / group's views based on fundamental research. The report and information contained herein is strictly confidential and meant solely for the selected recipient and may not be altered in any way, transmitted to, copied or distributed, in part or in whole, to any other person or to the media or reproduced in any form, without prior written consent. This report and information herein is solely for informational purpose and may not be used or considered as an offer document or solicitation of offer to buy or sell or subscribe for securities or other financial instruments. Nothing in this report constitutes investment, legal, accounting and tax advice or a representation that any investment or strategy is suitable or appropriate to your specific circumstances. The securities discussed and opinions expressed in this report may not be suitable for all investors, who must make their own investment decisions, based on their own investment objectives, financial positions and needs of specific recipient. This may not be taken in substitution for the exercise of independent judgment by any recipient. Each recipient of this document should make such investigations as it deems necessary to arrive at an independent evaluation of an investment in the securities of companies referred to in this document (including the merits and risks involved), and should consult its own advisors to determine the merits and risks of such an investment. The investment discussed or views expressed may not be suitable for all investors. Certain transactions -including those involving futures, options another derivatives as well as non-investment grade securities - involve substantial risk and are not suitable for all investors. No representation or warranty, express or implied, is made as to the accuracy, completeness or fairness of the information and opinions contained in this document. The Disclosures of Interest Statement incorporated in this document is provided solely to enhance the transparency and should not be treated as endorsement of the views expressed in the report. This information is subject to change without any prior notice. The Company reserves the right to make modifications and alternations to this statement as may be required from time to time without any prior approval. MEHTA EQUITIES LTD, its affiliates, their directors and the employees may from time to time, effect or have effected an own account transaction in, or deal as principal or agent in or for the securities mentioned in this document. They may perform or seek to perform investment banking or other services for, or solicit investment banking or other business from, any company referred to in this report. Each of these entities functions as a separate, distinct and independent of each other. The recipient should take this into account before interpreting the document. This report has been prepared on the basis of information that is already available in publicly accessible media or developed through analysis of MEHTA EQUITIES LTD. The views expressed are those of the analyst and the Company may or may not subscribe to all the views expressed therein. This document is being supplied to you solely for your information and may not be reproduced, redistributed or passed on, directly or indirectly, to any other person or published, copied, in whole or in part, for any purpose. Neither this document nor any copy of it may be taken or transmitted into the United State (to U.S. Persons), Canada, or Japan or distributed, directly or indirectly, in the United States or Canada or distributed or redistributed in Japan or to any resident thereof. This report is not directed or intended for distribution to, or use by, any person or entity who is a citizen or resident of or located in any locality, state, country or other jurisdiction, where such distribution, publication, availability or use would be contrary to law, regulation or which would subject MEHTA EQUITIES LTD to any registration or licensing requirement within such jurisdiction. The securities described herein may or may not be eligible for sale in all jurisdictions or to certain category of investors. Persons in whose possession this document may come are required to inform themselves of and to observe such restriction. Neither the Firm, not its directors, employees, agents or representatives shall be liable for any damages whether direct or indirect, incidental, special or consequential including lost revenue or lost profits that may arise from or in connection with the use of the information.

MEHTA EQUITIES LTD

BSE: - Membership Clearing No. 122 - SEBI Regn. No. INB010683856, NSE: - Membership Clearing No. 13512- SEBI Regn. No. INB231351231, NSE FO SEBI Regn. No. INF231351231, CIN No: U65990MH1994PLC078478
MSEI: - Membership Clearing No. 51800 - SEBI Regn. No. INB261351234

Mehta Equities Limited, 903, 9th floor, Lodha Supremus, Dr.E. Moses Road, Worli Naka, Worli, Mumbai 400 018, India
Tel: +91 22 6150 7101, Fax: +91 22 6150 7102

Email: info@mehtagroup.in, Website: www.mehtagroup.in