

Indices	CMP	%1D
Sensex	33774	-0.69
Nifty	10378	-0.71
BSE-Midcap	16428	-1.05
BSE-Smallcap	17857	-0.99
SGX Nifty	10362	-0.09

Sector	CMP	%1D
Capital Goods	18900	-1.56
Realty	2437	-1.12
Consumer Dur	20891	-0.34
Metal	14882	-1.60
Oil & Gas	15388	-1.01
Teck	6509	-0.44

Index	FY17	FY18E	FY19E
Sensex EPS	1469	1785	1958
P/E	24	20	18
Nifty EPS	466	575	623
P/E	24	19	18

Trading activity in cash Rs Cr			
Date 19 February	Net	MTD	FY18
FII	-895	-9951	-77762
DII	586	8371	98800

Global Indices	Current Value	%1D
DowJones	25219	0.08
Nasdaq	7239	-0.23
DAX	12402	-0.40
Nikkei 225	22149	1.94
FTSE 100	7258	-0.49
Hang Seng	31115	1.93
Shanghai	3199	0.45
Straits Times	3487	1.27

Forex Rate		
USD/INR	64.27	0.44%
EUR/INR	80.26	0.47%
GBP/INR	90.41	0.51%
JPY/INR	60.56	0.87%

G-Sec Yield		
	Price	Change%
1yr Bond Yield	6.68	-0.43
10yr Bond Yield	7.58	0.16

Market Outlook

Indian markets are expected to open with a flat positive note backed by mixed global sentiments. On overall basis direction for the markets are on consolidation note. Nifty major supports near 10300. We advise investors to start accumulating quality counters and watch strategy for the time being.

Top Domestic News

- IndiGrid Trust -Investment in power transmission asset of Techno Electric and Engineering Company Limited. Completed acquisitions of 3 units from Sterlite Power Grid Ventures Limited
- Tata Power -Gets shareholders' nod for scheme of agreement with Tata Power Renewable Energy. Gets shareholders' nod for scheme of agreement with Supa Windfarm, Nivade Windfarm. Gets shareholders' nod for scheme of agreement with Tata Power Green Energy.
- M&M to invest Rs 500 crore for electric vehicle and electric vehicle components in Chakan as a part of expansion efforts.
- Equity intelligence buys 13,350 shares (0.1 percent of share capital) of Kaya.
- Sun Pharma's wholly owned subsidiary buys additional shares in Ranbaxy Malaysia Sdn Bhd, post completion stake will increase to 90.74 percent.
- 63 Moons, NSEL merger case another hearing on April 18.
- Religare Enterprises says raising of funds through issue of warrants for preferential issue by issuing 17.5 crore warrants at Rs 52.2 per share.
- Godawari Power and Ispat amalgamates with Jagdamba Power and Alloys; transferor company has 25MW captive power plant.
- Deccan Value is top bidder for Amtek Auto: Media Report.
- Binani Industries move National Company Law Tribunal (NCLT) over cement business sale.
- GSK Consumer Healthcare to enter protein supplement segment.
- JSW Energy inks MoU with Maharashtra to make electric vehicles.
- HDFC in M&A talks with Apollo Munich.

Global News

Asian shares were moderately lower early on Tuesday after a relatively quiet overnight session, due to U.S. markets being closed for a holiday in the last session. Japan's Nikkei 225 slid 0.86 percent in the early going as financials, manufacturing and energy-related names traded in negative territory, while technology stocks traded mixed, CNBC reported.

NSE Top Gainers

Script	LTP	%1D
INFRATEL	331.85	1.31
YESBANK	314.35	0.82
RELIANCE	928.30	0.76
COALINDIA	305.80	0.76
AXISBANK	541.75	0.73

NSE Top Losers

Script	LTP	%1D
TATASTEEL	649.00	-5.91
DRREDDY	2155.00	-2.65
BAJAJ-AUTO	3026.30	-2.50
LT	1295.55	-2.47
HCLTECH	914.00	-2.47

BSE Top Gainers

Script	LTP	%1D
RAIN	391.75	7.55
FORTIS	146.35	6.44
RELIGARE	63.15	4.90
UBL	1054.05	4.34
APOLLOHOSP	1187.05	4.29

BSE Top Losers

Script	LTP	%1D
PNB	116.40	-7.36
NIITTECH	761.45	-7.25
UNIONBANK	109.80	-7.19
PCJEWELLER	354.45	-6.66
SYNDIBANK	55.80	-6.45

Technical View

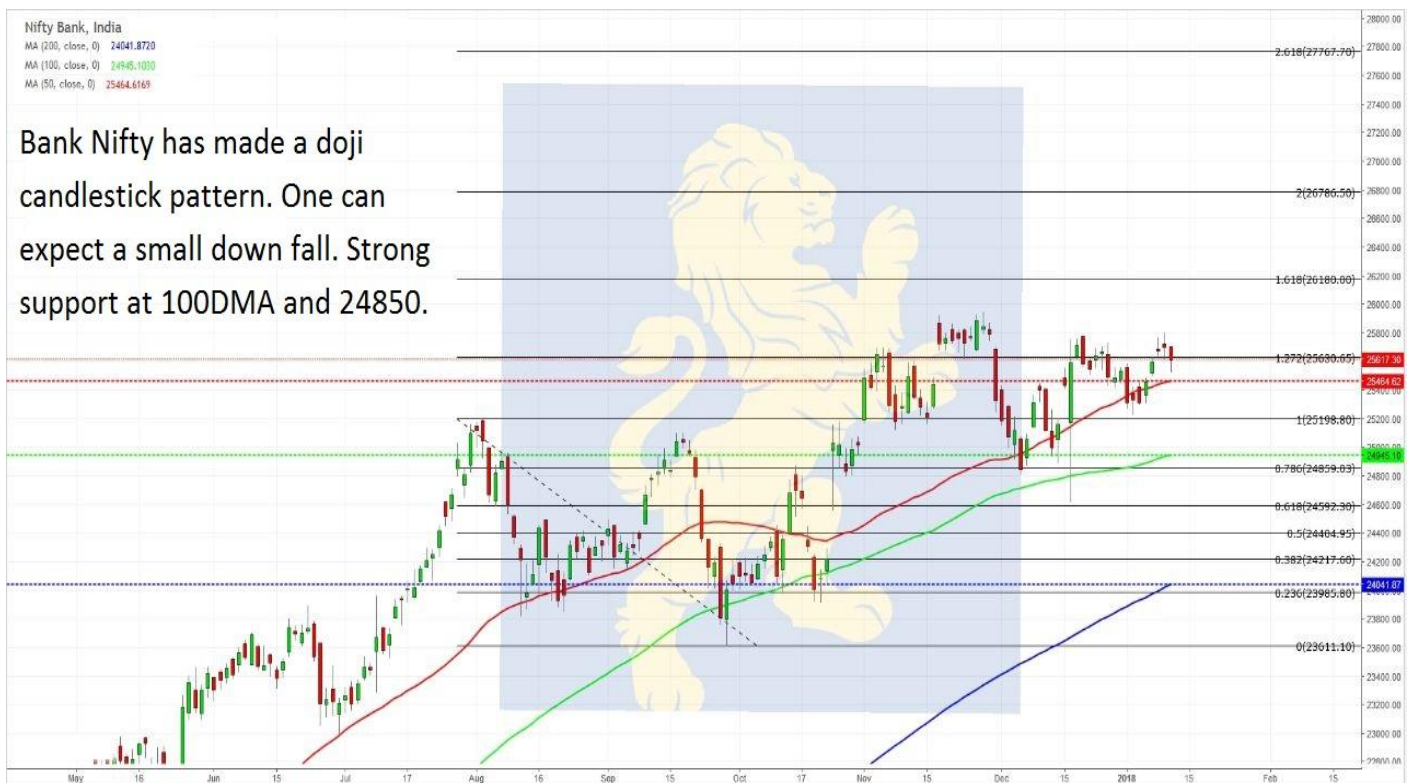
Nifty 50, India
 MA (200, close, 0) 9866.8793
 MA (100, close, 0) 10180.2700
 MA (50, close, 0) 10351.4070

Nifty has achieved DOUBLE BOTTOM patterns target. Nifty made a doji candlestick pattern. It is very important that Nifty closes above 10660 for more bullish upmove.



Nifty Bank, India
 MA (200, close, 0) 24041.8720
 MA (100, close, 0) 24945.1030
 MA (50, close, 0) 25464.6169

Bank Nifty has made a doji candlestick pattern. One can expect a small down fall. Strong support at 100DMA and 24850.



Msearch



Disclaimer: The views expressed / recommendations made in this report are based on Technical Analysis techniques and could be at variance with the company's / group's views based on fundamental research. The report and information contained herein is strictly confidential and meant solely for the selected recipient and may not be altered in any way, transmitted to, copied or distributed, in part or in whole, to any other person or to the media or reproduced in any form, without prior written consent. This report and information herein is solely for informational purpose and may not be used or considered as an offer document or solicitation of offer to buy or sell or subscribe for securities or other financial instruments. Nothing in this report constitutes investment, legal, accounting and tax advice or a representation that any investment or strategy is suitable or appropriate to your specific circumstances. The securities discussed and opinions expressed in this report may not be suitable for all investors, who must make their own investment decisions, based on their own investment objectives, financial positions and needs of specific recipient. This may not be taken in substitution for the exercise of independent judgment by any recipient. Each recipient of this document should make such investigations as it deems necessary to arrive at an independent evaluation of an investment in the securities of companies referred to in this document (including the merits and risks involved), and should consult its own advisors to determine the merits and risks of such an investment. The investment discussed or views expressed may not be suitable for all investors. Certain transactions -including those involving futures, options another derivatives as well as non-investment grade securities - involve substantial risk and are not suitable for all investors. No representation or warranty, express or implied, is made as to the accuracy, completeness or fairness of the information and opinions contained in this document. The Disclosures of Interest Statement incorporated in this document is provided solely to enhance the transparency and should not be treated as endorsement of the views expressed in the report. This information is subject to change without any prior notice. The Company reserves the right to make modifications and alternations to this statement as may be required from time to time without any prior approval. MEHTA EQUITIES LTD, its affiliates, their directors and the employees may from time to time, effect or have effected an own account transaction in, or deal as principal or agent in or for the securities mentioned in this document. They may perform or seek to perform investment banking or other services for, or solicit investment banking or other business from, any company referred to in this report. Each of these entities functions as a separate, distinct and independent of each other. The recipient should take this into account before interpreting the document. This report has been prepared on the basis of information that is already available in publicly accessible media or developed through analysis of MEHTA EQUITIES LTD. The views expressed are those of the analyst and the Company may or may not subscribe to all the views expressed therein. This document is being supplied to you solely for your information and may not be reproduced, redistributed or passed on, directly or indirectly, to any other person or published, copied, in whole or in part, for any purpose. Neither this document nor any copy of it may be taken or transmitted into the United State (to U.S. Persons), Canada, or Japan or distributed, directly or indirectly, in the United States or Canada or distributed or redistributed in Japan or to any resident thereof. This report is not directed or intended for distribution to, or use by, any person or entity who is a citizen or resident of or located in any locality, state, country or other jurisdiction, where such distribution, publication, availability or use would be contrary to law, regulation or which would subject MEHTA EQUITIES LTD to any registration or licensing requirement within such jurisdiction. The securities described herein may or may not be eligible for sale in all jurisdictions or to certain category of investors. Persons in whose possession this document may come are required to inform themselves of and to observe such restriction. Neither the Firm, not its directors, employees, agents or representatives shall be liable for any damages whether direct or indirect, incidental, special or consequential including lost revenue or lost profits that may arise from or in connection with the use of the information.

MEHTA EQUITIES LTD

BSE: - Membership Clearing No. 122 - SEBI Regn. No. INB010683856, NSE: - Membership Clearing No. 13512- SEBI Regn. No. INB231351231, NSE FO SEBI Regn. No. INF231351231, CIN No: U65990MH1994PLC078478
MSEI: - Membership Clearing No. 51800 - SEBI Regn. No. INB261351234

Mehta Equities Limited, 903, 9th floor, Lodha Supremus, Dr.E. Moses Road, Worli Naka, Worli, Mumbai 400 018, India
Tel: +91 22 6150 7101, Fax: +91 22 6150 7102

Email: info@mehtagroup.in, Website: www.mehtagroup.in