

Indices	CMP	%1D
Sensex	33703	-0.21
Nifty	10360	-0.17
BSE-Midcap	16419	-0.06
BSE-Smallcap	17831	-0.15
SGX Nifty	10404	0.73

Sector	CMP	%1D
Capital Goods	18844	-0.30
Realty	2422	-0.64
Consumer Dur	21238	1.66
Metal	15059	1.19
Oil & Gas	15390	0.01
Teck	6538	0.45

Index	FY17	FY18E	FY19E
Sensex EPS	1469	1785	1958
P/E	24	20	18
Nifty EPS	466	575	623
P/E	24	19	18

Trading activity in cash Rs Cr			
Date 20 February	Net	MTD	FY18
FII	-850	-10801	-78612
DII	1437	9808	100237

Global Indices	Current Value	%1D
DowJones	25132	-0.35
Nasdaq	7291	0.71
DAX	12487	0.82
Nikkei 225	21925	-1.02
FTSE 100	7246	-0.01
Hang Seng	30873	-0.78
Shanghai	3199	0.45
Straits Times	3476	-0.33

Forex Rate		
USD/INR	64.84	0.89%
EUR/INR	80.04	-0.26%
GBP/INR	90.70	0.32%
JPY/INR	60.53	-0.05%

G-Sec Yield		
	Price	Change%
1yr Bond Yield	6.70	0.34
10yr Bond Yield	7.67	1.19

## Market Outlook

Indian markets are expected to open with a flat positive note backed by mixed global sentiments. On overall basis direction for the markets are on consolidation note. Nifty major supports near 10200- 10300. We advise investors to start accumulating quality counters with wait and watch strategy for the time being.

## Top Domestic News

- Cabinet approves creation of National Urban Housing Fund for Rs 60,000 cr
- Union Bank says that it classified Rotomac Global account as a non-performing asset in October 2016
- Bank Of India Gets shareholders' nod to issue fresh capital as tier-I/tier-II bonds for pref shrs for amount up to Rs 10,000 cr. Gets shareholders' nod to issue shares worth RS 6,975 cr to govt
- Reliance Industries, Eros International PLC. Reliance invests in 5% stake of Eros for USD 48.75mn
- To set up 1000cr corpus to produce content.
- Max India, Max Healthcare Company's equal JV, life healthcare group holdings ltd initiates preliminary discussions with company to explore possibility of acquisition of Life healthcare shares in max healthcare institute limited by the company
- Fortis Promoter invokes pledged shareholding. Promoter holding falls from 8.85% to 5.87%
- Weizmann Forex Board had approved demerger of wind power biz in Oct 2017. Board has decided to pursue the demerger only post raising of funds through public issue/ private placement. Appointed date on 1st April 2018.
- HDFC disburses Rs28bn loans under Central scheme - BS
- Liberty House submits bid for Bhushan Power
- Bank of Baroda says it has Rs 456cr exposure in Rotomac, account declared as NPA in Oct'2015
- DGH may review plan to sell 60% stake in ONGC, Oil India fields
- Bank of Maharashtra - ICRA revises ratings of various bonds.
- ICRA places rating on various bonds of PNB under watch with negative implications.
- Dilip Buildcon declared as L1 bidder for NHA project worth Rs 380.07cr.

## Global News

The Dow and S&P 500 fell on Tuesday to snap a six-session winning streak as a sharp decline in Walmart weighed heavily, but gains in Amazon and chip stocks helped the Nasdaq hold near the unchanged mark. The Dow Jones Industrial Average fell 254.63 points, or 1.01 %, to 24,964.75, the S&P 500 lost 15.96 points, or 0.58 %, to 2,716.26 and the Nasdaq Composite dropped 5.16 points, or 0.07 %, to 7,234.31, Reuters reported. Asian markets were relatively subdued early on Wednesday, with most regional indexes hovering around the flat line following the softer lead stateside. Japan's benchmark Nikkei 225 index was fairly muted, trading higher by 0.06 % in the morning, CNBC reported.

## NSE Top Gainers

Script	LTP	%1D
AMBUJACEM	265.70	3.16
VEDL	329.00	2.70
COALINDIA	311.00	1.83
INFRATEL	334.45	1.39
ASIANPAINT	1133.65	1.19

## NSE Top Losers

Script	LTP	%1D
M&M	709.00	-2.16
AXISBANK	530.70	-1.82
KOTAKBANK	1041.75	-1.37
AUOPHARMA	574.00	-1.37
YESBANK	308.05	-1.28

## BSE Top Gainers

Script	LTP	%1D
JINDALSAW	133.85	5.35
FORTIS	153.45	4.85
SYNDIBNK	58.45	4.75
APOLLOTYRE	265.05	4.21
VIJAYABNK	59.65	3.92

## BSE Top Losers

Script	LTP	%1D
ASTRAMICRO	95.55	-6.09
PRESTIGE	302.15	-5.75
VAKRANGEE	221.55	-5.00
RELIGARE	60.00	-4.99
LTTS	1267.45	-4.37

## Technical View

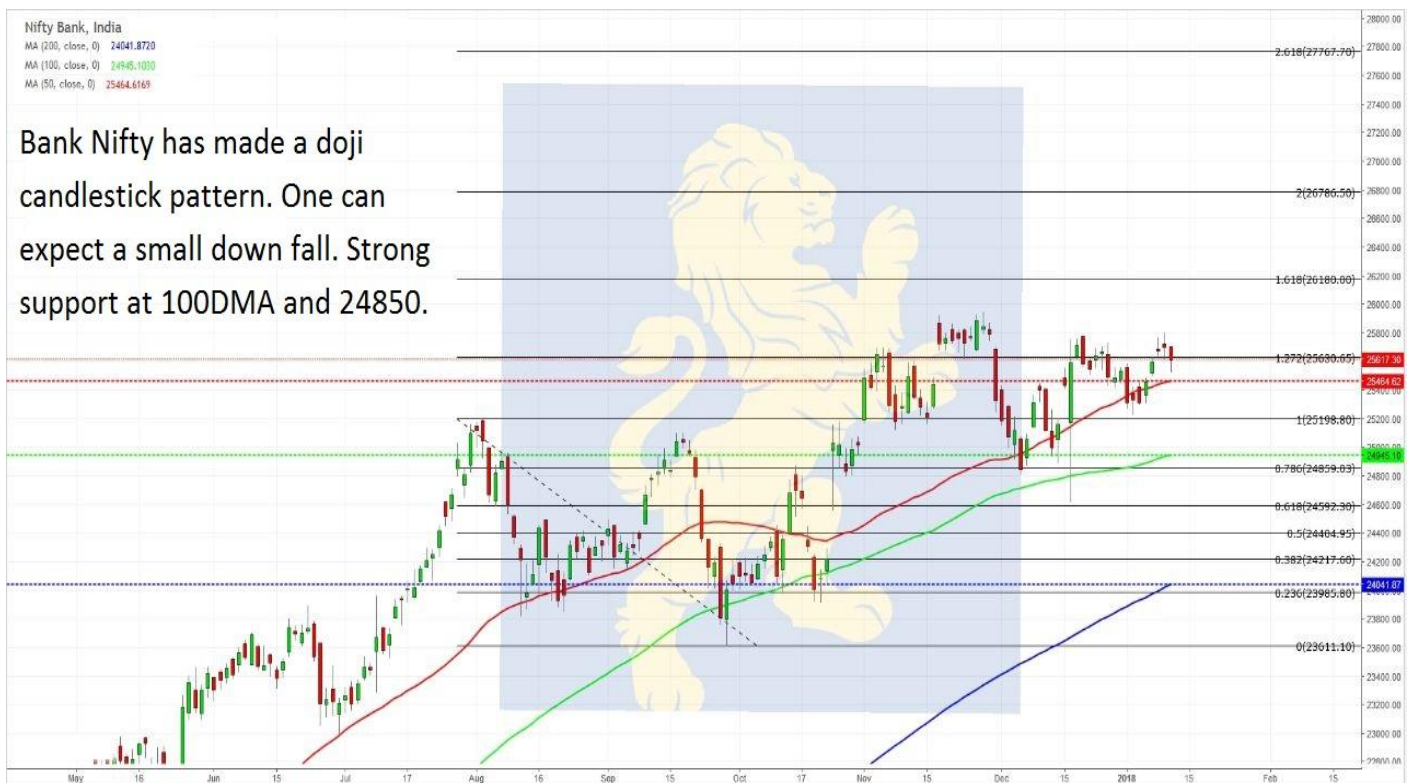
Nifty 50, India  
 MA (200, close, 0) 9866.8793  
 MA (100, close, 0) 10180.2700  
 MA (50, close, 0) 10351.4070

Nifty has achieved DOUBLE BOTTOM patterns target. Nifty made a doji candlestick pattern. It is very important that Nifty closes above 10660 for more bullish upmove.



Nifty Bank, India  
 MA (200, close, 0) 24041.8720  
 MA (100, close, 0) 24945.1030  
 MA (50, close, 0) 25464.6169

Bank Nifty has made a doji candlestick pattern. One can expect a small down fall. Strong support at 100DMA and 24850.



# Msearch



**Disclaimer:** The views expressed / recommendations made in this report are based on Technical Analysis techniques and could be at variance with the company's / group's views based on fundamental research. The report and information contained herein is strictly confidential and meant solely for the selected recipient and may not be altered in any way, transmitted to, copied or distributed, in part or in whole, to any other person or to the media or reproduced in any form, without prior written consent. This report and information herein is solely for informational purpose and may not be used or considered as an offer document or solicitation of offer to buy or sell or subscribe for securities or other financial instruments. Nothing in this report constitutes investment, legal, accounting and tax advice or a representation that any investment or strategy is suitable or appropriate to your specific circumstances. The securities discussed and opinions expressed in this report may not be suitable for all investors, who must make their own investment decisions, based on their own investment objectives, financial positions and needs of specific recipient. This may not be taken in substitution for the exercise of independent judgment by any recipient. Each recipient of this document should make such investigations as it deems necessary to arrive at an independent evaluation of an investment in the securities of companies referred to in this document (including the merits and risks involved), and should consult its own advisors to determine the merits and risks of such an investment. The investment discussed or views expressed may not be suitable for all investors. Certain transactions -including those involving futures, options another derivatives as well as non-investment grade securities - involve substantial risk and are not suitable for all investors. No representation or warranty, express or implied, is made as to the accuracy, completeness or fairness of the information and opinions contained in this document. The Disclosures of Interest Statement incorporated in this document is provided solely to enhance the transparency and should not be treated as endorsement of the views expressed in the report. This information is subject to change without any prior notice. The Company reserves the right to make modifications and alternations to this statement as may be required from time to time without any prior approval. MEHTA EQUITIES LTD, its affiliates, their directors and the employees may from time to time, effect or have effected an own account transaction in, or deal as principal or agent in or for the securities mentioned in this document. They may perform or seek to perform investment banking or other services for, or solicit investment banking or other business from, any company referred to in this report. Each of these entities functions as a separate, distinct and independent of each other. The recipient should take this into account before interpreting the document. This report has been prepared on the basis of information that is already available in publicly accessible media or developed through analysis of MEHTA EQUITIES LTD. The views expressed are those of the analyst and the Company may or may not subscribe to all the views expressed therein. This document is being supplied to you solely for your information and may not be reproduced, redistributed or passed on, directly or indirectly, to any other person or published, copied, in whole or in part, for any purpose. Neither this document nor any copy of it may be taken or transmitted into the United State (to U.S. Persons), Canada, or Japan or distributed, directly or indirectly, in the United States or Canada or distributed or redistributed in Japan or to any resident thereof. This report is not directed or intended for distribution to, or use by, any person or entity who is a citizen or resident of or located in any locality, state, country or other jurisdiction, where such distribution, publication, availability or use would be contrary to law, regulation or which would subject MEHTA EQUITIES LTD to any registration or licensing requirement within such jurisdiction. The securities described herein may or may not be eligible for sale in all jurisdictions or to certain category of investors. Persons in whose possession this document may come are required to inform themselves of and to observe such restriction. Neither the Firm, not its directors, employees, agents or representatives shall be liable for any damages whether direct or indirect, incidental, special or consequential including lost revenue or lost profits that may arise from or in connection with the use of the information.

## MEHTA EQUITIES LTD

BSE: - Membership Clearing No. 122 - SEBI Regn. No. INB010683856, NSE: - Membership Clearing No. 13512- SEBI Regn. No. INB231351231, NSE FO SEBI Regn. No. INF231351231, CIN No: U65990MH1994PLC078478  
MSEI: - Membership Clearing No. 51800 - SEBI Regn. No. INB261351234

Mehta Equities Limited, 903, 9th floor, Lodha Supremus, Dr.E. Moses Road, Worli Naka, Worli, Mumbai 400 018, India  
Tel: +91 22 6150 7101, Fax: +91 22 6150 7102

Email: [info@mehtagroup.in](mailto:info@mehtagroup.in), Website: [www.mehtagroup.in](http://www.mehtagroup.in)