

Indices	CMP	%1D
Sensex	34445	0.89
Nifty	10582	0.87
BSE-Midcap	16684	0.74
BSE-Smallcap	18154	0.88
SGX Nifty	10627	0.29

Sector	CMP	%1D
Capital Goods	19236	1.83
Realty	2516	3.30
Consumer Dur	21093	0.59
Metal	15482	1.01
Oil & Gas	15524	0.92
Teck	6684	-0.69

Index	FY17	FY18E	FY19E
Sensex EPS	1469	1785	1958
P/E	24	20	18
Nifty EPS	466	575	623
P/E	24	19	18

Trading activity in cash Rs Cr			
Date 26 February	Net	MTD	FY18
FII	-1119	-15955	-83766
DII	1409	15165	105594

Global Indices	Current Value	%1D
DowJones	25638	1.30
Nasdaq	7389	0.70
DAX	12527	0.35
Nikkei 225	22153	1.18
FTSE 100	7289	0.62
Hang Seng	31498	0.73
Shanghai	3330	1.24
Straits Times	3555	0.64

Forex Rate		
USD/INR	64.73	-0.50%
EUR/INR	79.60	-0.42%
GBP/INR	90.24	-0.08%
JPY/INR	60.56	-0.09%

G-Sec Yield	Price	Change%
1yr Bond Yield	6.69	0.10
10yr Bond Yield	7.69	0.22

## Market Outlook

Indian markets are expected to open with a positive note backed by constructive global sentiments. On overall basis direction for the markets are on positive consolidation. Nifty major supports near 10420 We advise investors to start accumulating quality counters.

## Top Domestic News

- Jain Irrigation subsidiary invests in Innova Food NV Belgium. CY17 turnover of the acquired co - Euro 23.6mn
- Mahindra & Mahindra collaborates with LG Chem to for Lio-on battery technology to support EV revolution in India
- ACC says there are constraints in implementing merger between the Company and Ambuja Cements
- IOB approves preferential issue of shares to Gol upto Rs 4694cr
- Music Broadcast - Radio city and Apple music launch Bollywood countdown show
- LT Foods - CRISIL upgrades long term and short term ratings of the Co
- Sagar Cements board approves acquisition of hydel power plants (capacity of 4.3 MW and 4 MW) for a sum of 26.9cr
- HDFC Bank says will work closely with SEBI in relation to whatsapp data leak
- Simbhaoli Sugar says that in relation to the fraud case registered by OBC- co is in process of submitting the information and clarifications to the investigating agencies
- Indiabulls Real Estate's EGM on March 23 to seek shareholder approval for divestment of stake in Indiabulls Properties
- IMAX inks a new five year pact with PVR Cinemas
- JSW Steel, Monnet Ispat creditors OK Aion-JSW Offer for Monnet Ispat - ET
- KKR sells 5.9% stake in CCD to raise Rs 405cr
- RIL-BP's USD 4bn investment plan in KG-D6 approved
- PFC inks MoUs with UP power utilities to provide financial assistance of Rs 50,200cr

## Global News

US stocks rose to more than three-week highs on Monday, recovering much of the losses sustained in a sell-off earlier this month, as a decline in Treasury yields assuaged investor concerns about rising interest rates and refocused attention on economic growth. The Dow Jones Industrial Average rose 399.28 points, or 1.58 %, to 25,709.27, the S&P 500 gained 32.3 points, or 1.18 %, to 2,779.6 and the Nasdaq Composite added 84.07 points, or 1.15 %, to 7,421.46, Reuters reported. Markets in Asia advanced on Tuesday, tracking the rally on Wall Street which saw stocks close with gains of more than 1 %. Japan's Nikkei 225 rose 223.97 points, or 1.01 %, extending a 1.19 % gain seen in the last trading session. The Kospi tacked on 0.69 %, with gains seen in automakers, financials and technology names early in the session, CNBC reported.

## NSE Top Gainers

Script	LTP	%1D
MARUTI	9050.00	4.04
TATAMOTORS	372.80	3.50
LT	1344.00	3.25
INDUSINDBNK	1691.35	2.91
UPL	720.90	2.90

## NSE Top Losers

Script	LTP	%1D
SUNPHARMA	555.40	-2.50
TCS	3025.60	-1.63
TECHM	611.45	-1.61
INFY	1139.95	-1.36
ITC	266.05	-1.12

## BSE Top Gainers

Script	LTP	%1D
OBEROIREALTY	559.45	16.21
CHAMBLFERT	170.40	8.26
RCOM	29.75	7.99
KEC	428.40	6.90
PIIND	896.60	6.62

## BSE Top Losers

Script	LTP	%1D
ORIENTBNK	95.15	-10.02
VAKRANGEE	180.50	-5.00
JPASSOC	18.30	-4.69
SPARC	439.30	-3.97
VIDEOIND	15.90	-3.64

## Technical View

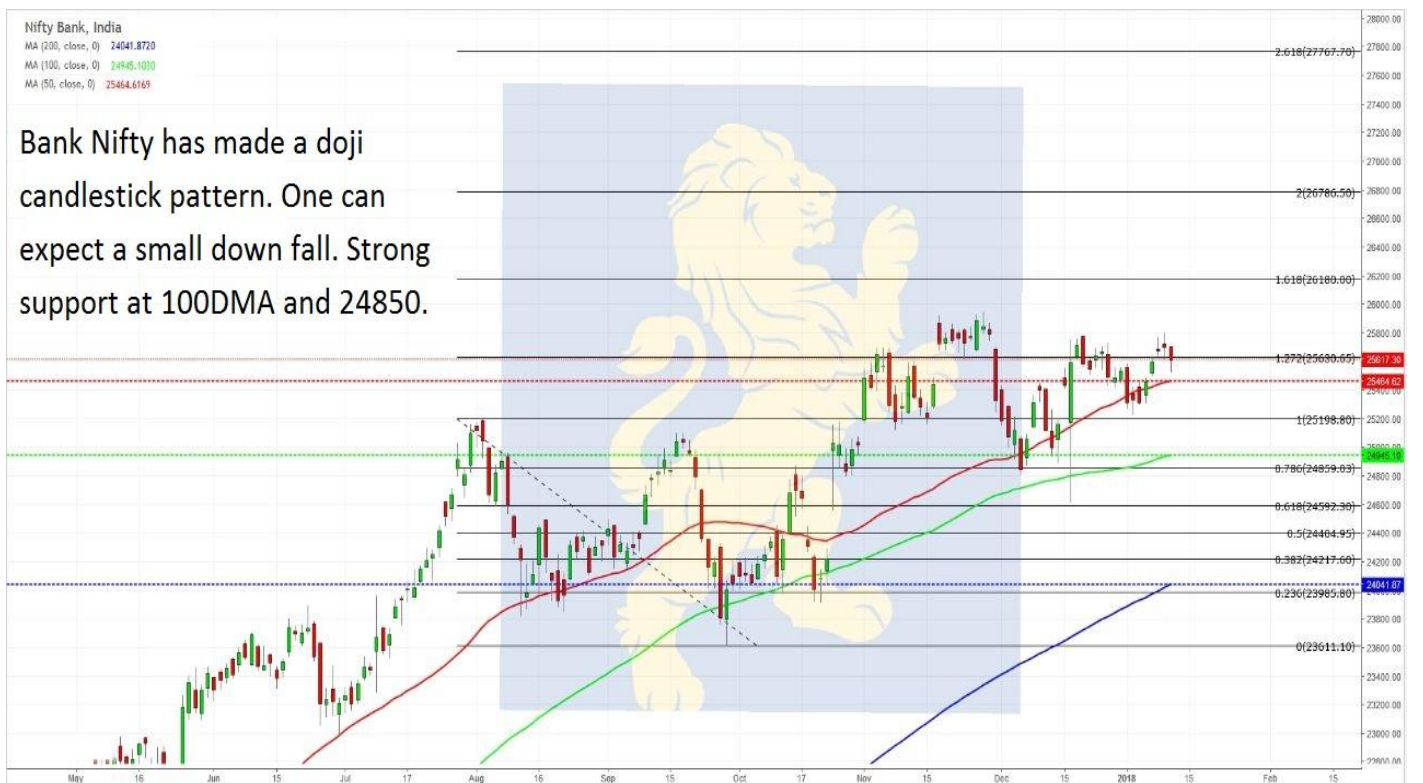
Nifty 50, India  
 MA (200, close, 0) 9866.8793  
 MA (100, close, 0) 10180.2700  
 MA (50, close, 0) 10351.4070

Nifty has achieved DOUBLE BOTTOM patterns target. Nifty made a doji candlestick pattern. It is very important that Nifty closes above 10660 for more bullish upmove.



Nifty Bank, India  
 MA (200, close, 0) 24041.8720  
 MA (100, close, 0) 24945.1030  
 MA (50, close, 0) 25464.6169

Bank Nifty has made a doji candlestick pattern. One can expect a small down fall. Strong support at 100DMA and 24850.



# Msearch



**Disclaimer:** The views expressed / recommendations made in this report are based on Technical Analysis techniques and could be at variance with the company's / group's views based on fundamental research. The report and information contained herein is strictly confidential and meant solely for the selected recipient and may not be altered in any way, transmitted to, copied or distributed, in part or in whole, to any other person or to the media or reproduced in any form, without prior written consent. This report and information herein is solely for informational purpose and may not be used or considered as an offer document or solicitation of offer to buy or sell or subscribe for securities or other financial instruments. Nothing in this report constitutes investment, legal, accounting and tax advice or a representation that any investment or strategy is suitable or appropriate to your specific circumstances. The securities discussed and opinions expressed in this report may not be suitable for all investors, who must make their own investment decisions, based on their own investment objectives, financial positions and needs of specific recipient. This may not be taken in substitution for the exercise of independent judgment by any recipient. Each recipient of this document should make such investigations as it deems necessary to arrive at an independent evaluation of an investment in the securities of companies referred to in this document (including the merits and risks involved), and should consult its own advisors to determine the merits and risks of such an investment. The investment discussed or views expressed may not be suitable for all investors. Certain transactions -including those involving futures, options another derivatives as well as non-investment grade securities - involve substantial risk and are not suitable for all investors. No representation or warranty, express or implied, is made as to the accuracy, completeness or fairness of the information and opinions contained in this document. The Disclosures of Interest Statement incorporated in this document is provided solely to enhance the transparency and should not be treated as endorsement of the views expressed in the report. This information is subject to change without any prior notice. The Company reserves the right to make modifications and alternations to this statement as may be required from time to time without any prior approval. MEHTA EQUITIES LTD, its affiliates, their directors and the employees may from time to time, effect or have effected an own account transaction in, or deal as principal or agent in or for the securities mentioned in this document. They may perform or seek to perform investment banking or other services for, or solicit investment banking or other business from, any company referred to in this report. Each of these entities functions as a separate, distinct and independent of each other. The recipient should take this into account before interpreting the document. This report has been prepared on the basis of information that is already available in publicly accessible media or developed through analysis of MEHTA EQUITIES LTD. The views expressed are those of the analyst and the Company may or may not subscribe to all the views expressed therein. This document is being supplied to you solely for your information and may not be reproduced, redistributed or passed on, directly or indirectly, to any other person or published, copied, in whole or in part, for any purpose. Neither this document nor any copy of it may be taken or transmitted into the United State (to U.S. Persons), Canada, or Japan or distributed, directly or indirectly, in the United States or Canada or distributed or redistributed in Japan or to any resident thereof. This report is not directed or intended for distribution to, or use by, any person or entity who is a citizen or resident of or located in any locality, state, country or other jurisdiction, where such distribution, publication, availability or use would be contrary to law, regulation or which would subject MEHTA EQUITIES LTD to any registration or licensing requirement within such jurisdiction. The securities described herein may or may not be eligible for sale in all jurisdictions or to certain category of investors. Persons in whose possession this document may come are required to inform themselves of and to observe such restriction. Neither the Firm, not its directors, employees, agents or representatives shall be liable for any damages whether direct or indirect, incidental, special or consequential including lost revenue or lost profits that may arise from or in connection with the use of the information.

## MEHTA EQUITIES LTD

BSE: - Membership Clearing No. 122 - SEBI Regn. No. INB010683856, NSE: - Membership Clearing No. 13512- SEBI Regn. No. INB231351231, NSE FO SEBI Regn. No. INF231351231, CIN No: U65990MH1994PLC078478  
MSEI: - Membership Clearing No. 51800 - SEBI Regn. No. INB261351234

Mehta Equities Limited, 903, 9th floor, Lodha Supremus, Dr.E. Moses Road, Worli Naka, Worli, Mumbai 400 018, India  
Tel: +91 22 6150 7101, Fax: +91 22 6150 7102

Email: [info@mehtagroup.in](mailto:info@mehtagroup.in), Website: [www.mehtagroup.in](http://www.mehtagroup.in)